

60" HIGH DOUBLE TIER GEN2 LOCKER

TYPICAL FOR 09", 12", 15, 21 & 24" WIDE
 TYPICAL FOR 12", 15", 18", 21" & 24" DEEP

ALUMINUM NUMBER PLATE
 (FIELD INSTALL)

FOUR SINGLE PRONG WALL
 ONE DOUBLE PRONG WALL
 HOOKS EACH OPENING
 (FIELD INSTALL)

LOCK HOLE COVER PLATE
 (FIELD INSTALL)

STAINLESS STEEL RECESSED
 HANDLE W/ PADLOCK EYE

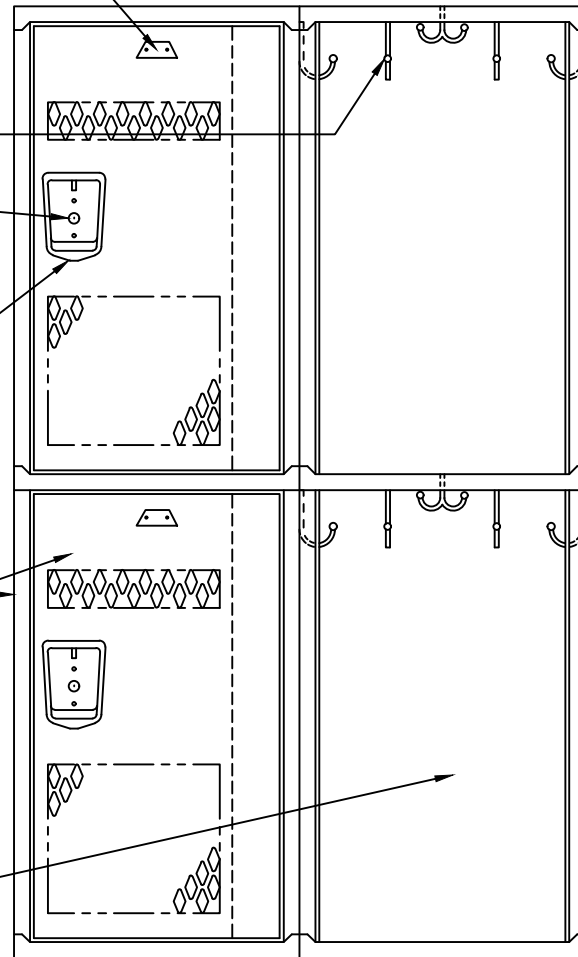
16GA. FRAME ASSEMBLY &
 14GA. DIAMOND DOOR W/PAN

16GA. SOLID BACK

WALL

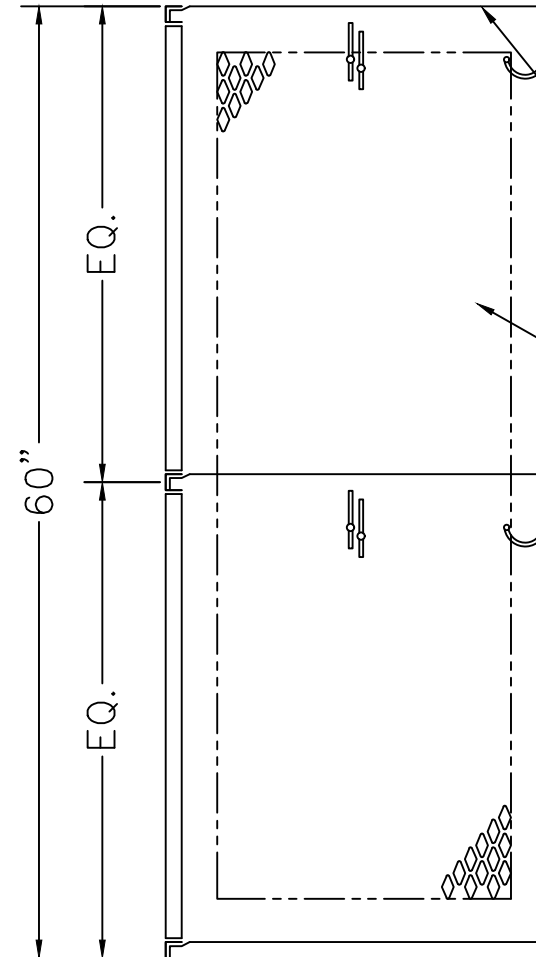
16GA. TOP, BOTTOM &
 CENTER OR SHELF

16GA. DIA PERF DIVISION



18 1/16"

LOCKER ELEVATION



60"

EQ.

EQ.

24"

LOCKER SECTION

TYPE A 18" x 24" x 30" / 60" DOUBLE TIER, GEN2 REC. HANDLE LOCKER

ALLOW 1/16" CREEPAGE PER FRAME