

Angle Iron

Welded Locker With Angle Iron Frame



Penco Angle Iron Steel Lockers

These are snapshot specifications for quick reference and product selection. Full 3-part specifications with expanded product information are available to download at www.pencoproducts.com and may include updates as a result of Penco's continuous product improvement initiatives.

At a Glance...

- Fully welded angle frame construction
- Available with piano-style or 3" hinges
- Diamond, solid or expanded metal sides
- Bottom reinforced with a 16G channel



SNAPSHOT SPECIFICATIONS

PART 1 – GENERAL

1.01 SECTION INCLUDES

Heavy Duty Welded Lockers

1.02 REFERENCES

ADAAG - Americans with Disabilities Act, Accessibility Guidelines.

1.03 SUBMITTALS

Submit under provisions of Section 01 33 00. Shop Drawings shall show dimensioned plans, elevations, and sections.

1.04 DELIVERY, STORAGE, AND HANDLING

Store products in manufacturer's unopened packaging until ready for installation to protect the locker finish and adjacent surfaces from damage.

PART 2 – PRODUCTS

2.01 MANUFACTURER

Penco Products, Inc. or approved equal based upon ability to provide product compliant with specifications of the product selected. Provide only metal lockers fabricated in the United States by a single domestic manufacturer.

2.02 MATERIALS

Steel: All Penco standard lockers are constructed using prime grade mild cold-rolled sheet steel free from surface imperfection meeting ASTM A1008

and capable of taking a high-grade enamel powder coat finish. Alternate material: Sheet steel components shall be fabricated using zinc-coated steel meeting ASTM A879 and finished in the same manner. Forged steel coat hooks with balled ends and truss fin head bolts and hex nuts will be zinc coated and supplied for all lockers unless otherwise indicated.

2.03 HEAVY DUTY LOCKERS

Acceptable Product: Penco Angle Iron Welded lockers. Tops, Bottoms and Shelves shall be fabricated from 16 gauge and backs from 18 gauge sheet steel. Locker doors shall be 14 gauge.

Framing: Consists of continuous 1 inch (25.5 mm) by 1 inch (25.5 mm) by 1/8 inch (3 mm) pickled angle iron steel. Frame members are welded. Intermediate cross frame members are standard on double and triple tier lockers.

Multi-Point Latch Doors: One piece sheet steel with full channel formation of adequate depth to fully conceal lock bar on lock side, channel formation on hinge side, right angle formations across top and bottom, with holes for attaching number plates. Doors over 15 inches wide by 60 inches or 72 inches high will include a 3 inch wide 20 gauge full height reinforcing pan welded to inside face of door at 6 inch centers.

Ventilation: 14 gauge doors and locker sides have standard 3/4 inch (19 mm) wide by 1-1/2 inch (38 mm) high diamond-shaped perforations. Doors less than 20 inches tall have 7/16 inch (11 mm) wide by 15/16 inch (24 mm) high diamond-shaped perforations.

Alternate Ventilation: Solid 16 gauge sides. 13 gauge flattened expanded metal.

Hinges: Continuous type: 16 gauge piano hinge measuring full height of door. Welded to door and attached to locker frame using steel rivets.

Alternate Hinge: 3 inch five-knuckle 14 gauge fast pin heavy duty butt hinges welded to frame and door.

2.04 DOOR HANDLES AND LATCHING

1, 2 and 3 Tier Lockers: Cremona

Latching: Handle shall be a heavy duty turn handle that engages the door frame on three sides. The top and bottom frames are engaged with 3/8 inch (9.5 mm) steel rods, and a 1/8 inch (3 mm) thick center latch engages at the side. Double door configurations shall consist of a left hinged door secured its full length by the right hinged door when latched. Handle assembly shall be secured to door using a threaded lock nut to facilitate adjustment and removal for repair if necessary. Welded handle

snapshot specifications v1.0.09 a



www.pencoproducts.com



SNAPSHOT SPECIFICATIONS (continued)

assemblies shall not be accepted.

Box Lockers: Punch doors for use with padlocks or built-in locks. Equip doors for use with padlocks with an 18 gauge combination door pull, staple, and lock hole cover plate with integral friction catch.

2.05 INTERIOR EQUIPMENT

ADA-Compliant Lockers: Single lockers: Hat shelf 48 inches from locker bottom or lower as required by base condition. Locker Bottom: Minimum of 9 inches off the floor, or an extra shelf placed 9 inches off the floor for side access or minimum of 15 inches off the floor for front access.

2.06 FABRICATION

Pre-assemble lockers by welding into one piece structures in groupings most practical for job requirements, welds free of burrs; maximum width of group to be 54 inches (1.371 m); no bolts, nuts, or rivets allowed in assembly of main locker groups. Bottoms: Formed of steel sheet; one continuous bottom for each group of lockers with front to back 16 gauge steel spacer channel welded to locker bottom when integral 4" bases are not used.

Finish: High quality powder coat paint finish applied in strict adherence to paint manufacturer's specifications to provide optimum appearance and performance. Finishes releasing VOCs are not acceptable. Standard coating thickness is 1 mil dry film thickness minimum. Powder Coat Plus option increases thickness to 2 mil minimum. Colors as selected from manufacturer's standard colors. All locker body components shall match color of door and frame.

Alternative Finishes: Custom color match, Anti Graffiti, antimicrobial, TGIC and high performance finishes are available.

PART 3 - EXECUTION

3.01 EXAMINATION

Do not begin installation until substrates and bases have been properly prepared. If substrate and bases are the responsibility of another installer, notify Architect of unsatisfactory preparation before proceeding.

3.02 INSTALLATION

Install metal lockers and accessories at locations shown in accordance with manufacturer's instructions. Install lockers plumb, level, and square. Anchor lockers to floor and wall at intervals recommended by the manufacturer. Bolt adjoining locker units together to provide rigid installation.

3.03 ADJUSTING

Adjust doors and latches to operate without binding. Verify that latches are operating satisfactorily. Adjust built-in locks to prevent binding of dial or key and ensure smooth operation prior to substantial completion.

Touch-up with factory-supplied paint and repair or replace damaged products before substantial completion.

3.04 PROTECTION

Protect installed products until completion of project.

Get the Full Specifications Here

[Log On:](#)



[Visit:](#)

www.pencoproducts.com

[Select:](#)



[Find:](#)



COPY & PASTE

Full product-specific 3-part specs to your documents!

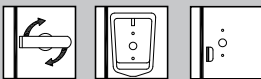
snapshot specifications v10.09 a

Ventilation Options



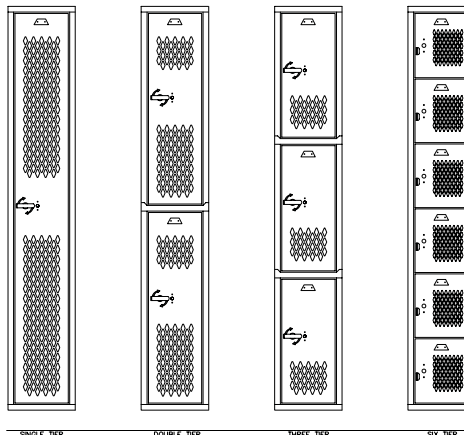
Diamond Shaped (S) Standard Louvers (O) Full Louvers (O) Mini Louvers (O) Solid Door (O)

Door Handle Options



Cremone 3 Point (S) Classic III Recessed (O) Friction Catch (SB)

S = Standard, O = Optional, SB = Standard on Box Lockers



Penco Products, Inc.
 2024 Cressman Road, Skippack, PA 19474
 PHONE: 800-562-1000 • FAX: 800-248-1555
 E-MAIL: general@pencoproducts.com

