

# 60" HIGH TRIPLE TIER GEN2 LOCKER

TYPICAL FOR 09", 12", 15, 21 & 24" WIDE  
 TYPICAL FOR 12", 15", 18", 21" & 24" DEEP

ALUMINUM NUMBER PLATE  
 (FIELD INSTALL)

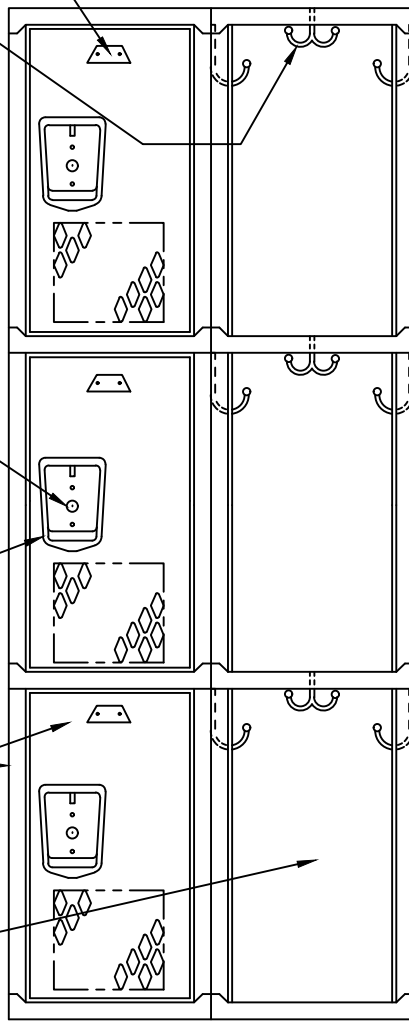
TWO SINGLE PRONG WALL  
 ONE DOUBLE PRONG WALL  
 HOOKS EACH OPENING  
 (FIELD INSTALL)

LOCK HOLE COVER PLATE  
 (FIELD INSTALL)

STAINLESS STEEL RECESSED  
 HANDLE W/ PADLOCK EYE

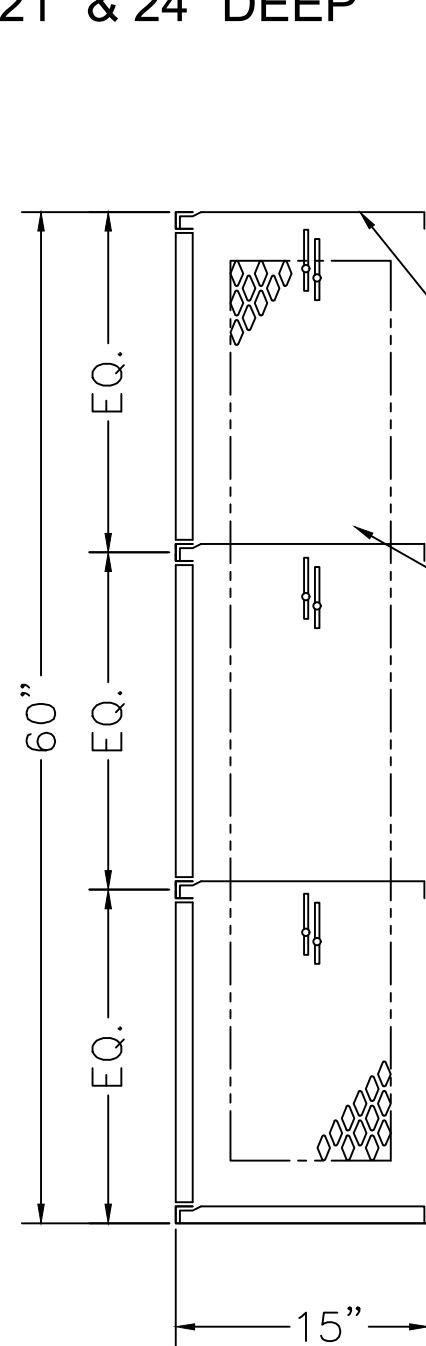
16GA. FRAME ASSEMBLY &  
 14GA. DIAMOND DOOR W/PAN

16GA. SOLID BACK



12 1/16"

LOCKER ELEVATION



WALL

16GA. TOP, BOTTOM &  
 CENTER OR SHELF

16GA. DIA PERF DIVISION

60"  
 EQ.  
 EQ.  
 EQ.

15"

LOCKER SECTION

## TYPE A 12" x 15" x 20" / 60" TRIPLE TIER, GEN2 REC. HANDLE LOCKER

ALLOW 1/16" CREEPAGE PER FRAME