

PATRIOT FULLY FRAMED TA-50

ALUMINUM NUMBER PLATE
(FIELD INSTALL)

TWO COAT ROD HOOKS
COAT ROD. TWO
REAR COAT HOOKS

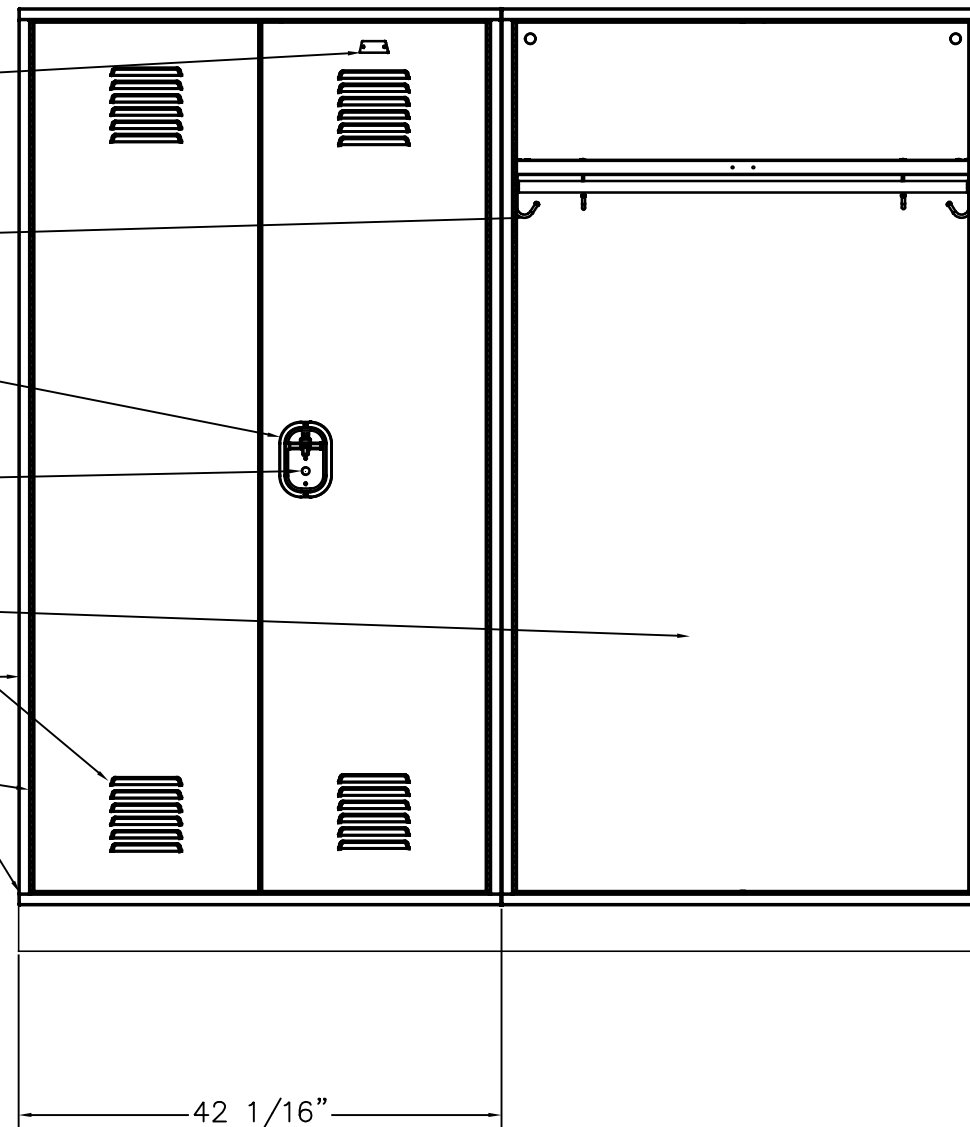
RECESSED POCKET WITH ADA
COMPLIANT ULTRA CREMONE LIFT
HANDLE WITH PADLOCK EYE
LOCK HOLE COVER PLATE
(FIELD INSTALL)

18GA. SOLID BACK

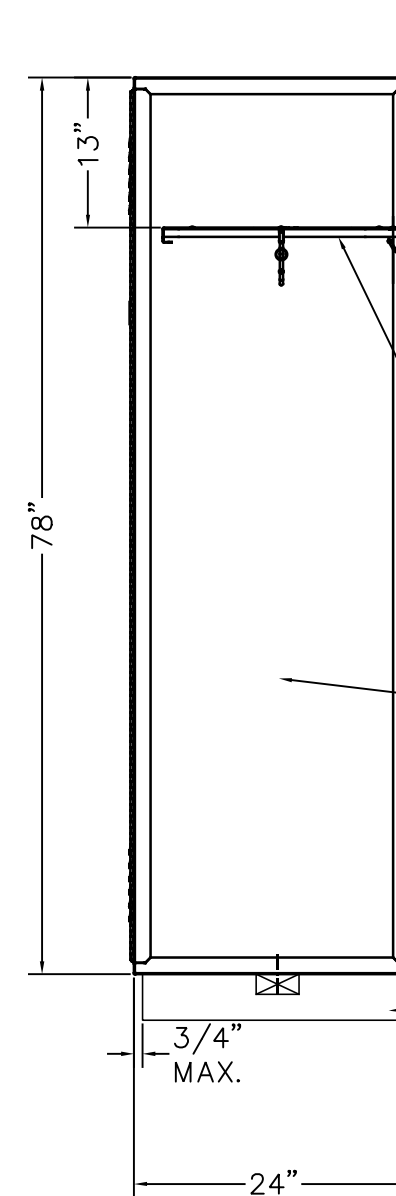
16GA. FRAME ASSEMBLY
14GA. LOUVER DOOR

CONTINUOUS HINGE

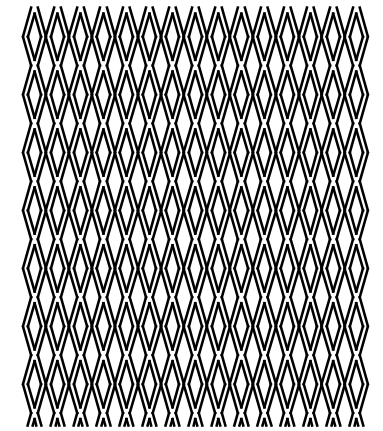
FULL FRAME CONSTRUCTION
8 INTEGRAL CAST CORNER PIECES



LOCKER ELEVATION



LOCKER SECTION



#13 FLAT. EXP. METAL

ANCHOR LOCKERS TIGHT
TO WALL @ 36" O.C.
(ANCHORS BY OTHERS)

16GA. TOP, BOTTOM &
INTERMEDIATE SHELF

#13 FLAT. EXP. SIDES
SOLID 16GA OPTIONAL

ANCHOR LOCKERS TIGHT
TO BASE/FLOOR @ 36" O.C.
(ANCHORS BY OTHERS)

CONCRETE BASE (BY OTHERS SHOWN)
AVAILABLE OPTIONAL 4" OR
6" CHANNEL BASE

AVAILABLE AS WELDED OR KNOCK DOWN
AVAILABLE SIZES 36X24X78, 42X24X78, 48X24X78
AVAILABLE DOOR PERFORATIONS SOLID, LOUVER, DIAMOND
AVAILABLE SIDE PERFORATIONS SOLID, FLATTENED EXPANDED METAL



1820 Stonehenge Drive Greenville NC