

60" HIGH DOUBLE TIER GEN2 LOCKER

TYPICAL FOR 09", 12", 15, 21 & 24" WIDE

TYPICAL FOR 12", 15", 18", 21" & 24" DEEP

ALUMINUM NUMBER PLATE
(FIELD INSTALL)

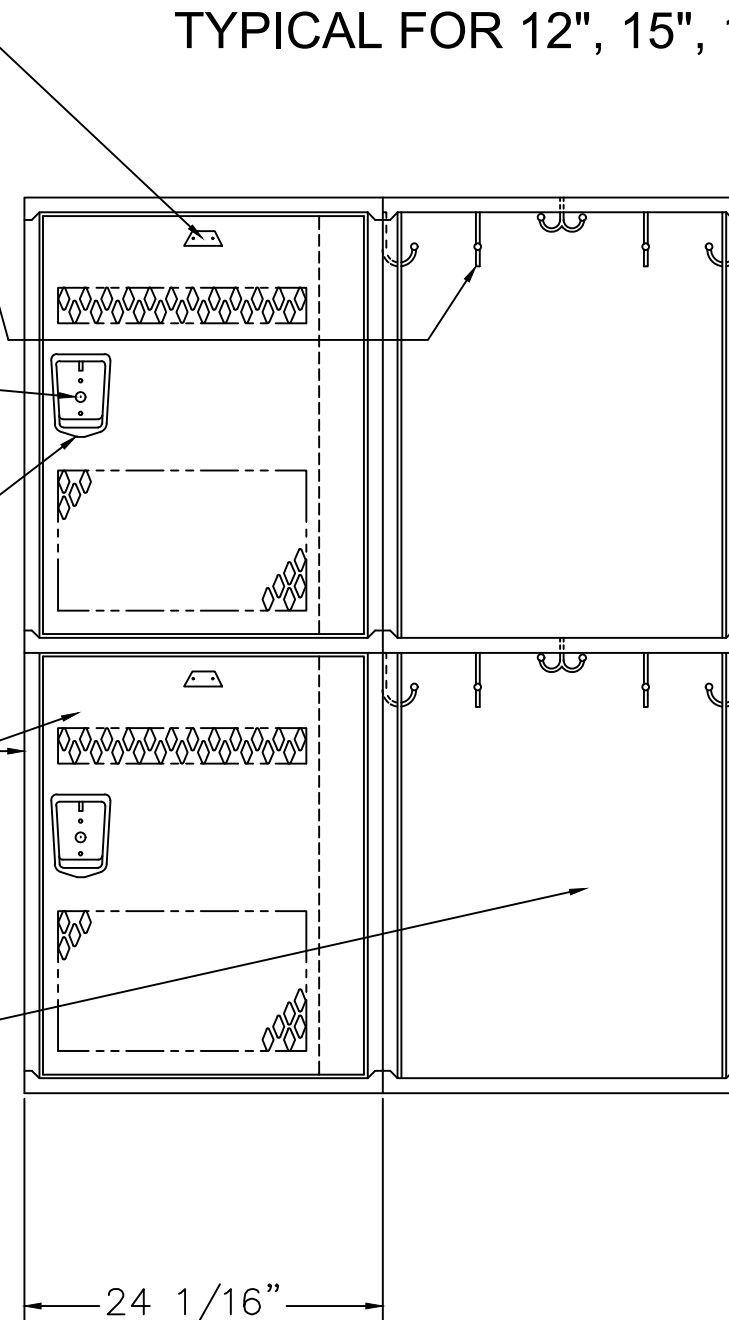
FOUR SINGLE PRONG WALL
ONE DOUBLE PRONG WALL
HOOKS EACH OPENING
(FIELD INSTALL)

LOCK HOLE COVER PLATE
(FIELD INSTALL)

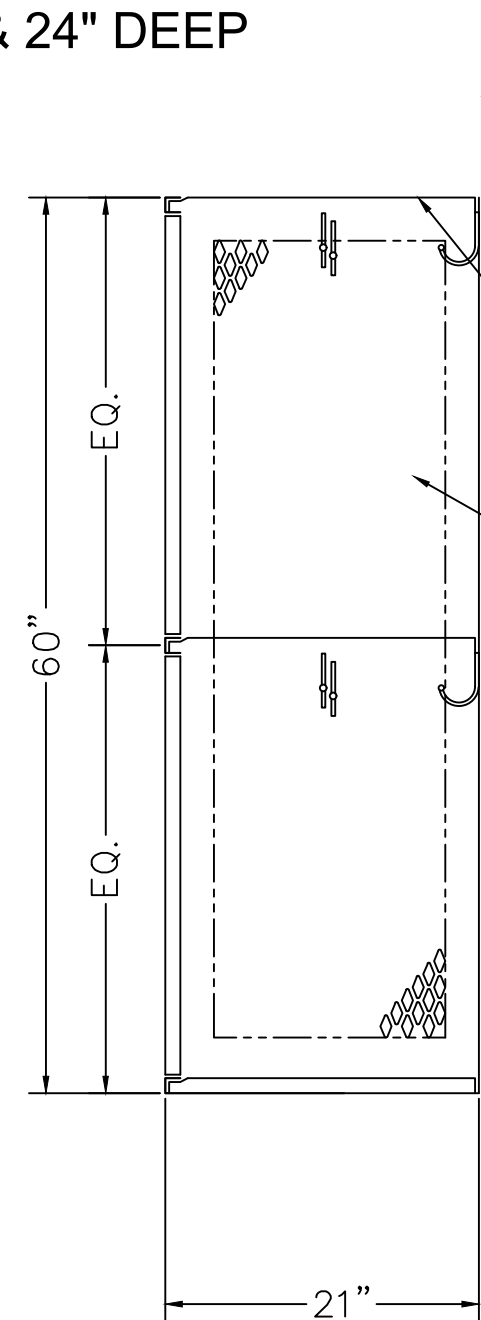
STAINLESS STEEL RECESSED
HANDLE W/ PADLOCK EYE

16GA. FRAME ASSEMBLY &
14GA. DIAMOND DOOR W/PAN

16GA. SOLID BACK



LOCKER ELEVATION



LOCKER SECTION

TYPE A 24" x 21" x 30"/60" DOUBLE TIER, GEN2 REC. HANDLE LOCKER

ALLOW 1/16" CREEPAGE PER FRAME