



A
P
R
I
L

2
0
2
5

PATRIOT®

PENCO'S FULLY FRAMED PATRIOT CATALOG



FEATURING:

TA-50 Locker | Gear Locker | Turnout Locker
Duty Locker | Rapid Response Duffel Locker

WHEN TIME MATTERS...

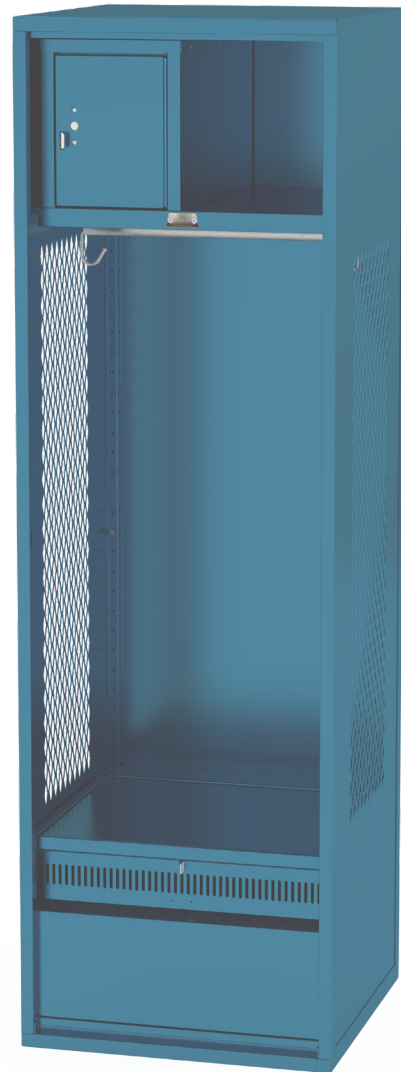


Penco's Patriot line of fully-framed lockers is built with the specific needs of first responders and military personnel in mind. With the highest standards of fit, finish, and functionality, these lockers come with options for durability, security, bench-seating, grab-and-go accessibility, bulk item storage capability and more. Our TA-50, Duty, Gear, and Turnout lockers come in 24 standard colors and multiple configuration options to meet every specialized storage need.

Penco Products, Inc. is a leader in the design, engineering, and fabrication of storage products and accessories. With over 150 years of experience in manufacturing metal storage products, we offer a broad range of high-quality steel lockers for a wide variety of industries. Our goal is to remain the number one provider of top-quality storage products.

Penco Patriot lockers are manufactured in the United States at our 475,000 square foot facility in Hamilton, NC. Using modern metal-working equipment and a state-of-the-art powder coat paint system, Penco delivers outstanding quality with superior service.

| | |
|----|--|
| 4 | PATRIOT FULLY FRAMED TA-50 LOCKER |
| 7 | PATRIOT FULLY FRAMED GEAR LOCKER |
| 12 | PATRIOT FULLY FRAMED TURNOUT LOCKER |
| 15 | PATRIOT FULLY FRAMED DUTY LOCKER |
| 18 | RAPID RESPONSE DUFFEL LOCKER |
| 23 | PATRIOT FULLY FRAMED OPTIONS & ACCESSORIES |
| 27 | PATRIOT LOCKING OPTIONS |
| 28 | PATRIOT LOCKER SPECIFICATIONS |
| 46 | PATRIOT COLOR OPTIONS |



The parent company of Penco Products and its affiliates is Industrial Manufacturing Company (IMC). IMC is a proud family of companies that produce a wide variety of innovative products for industry. With more than 3,500 direct employees and over 34 worldwide manufacturing, sales and distribution facilities, we provide tier-one products and services to some of the most demanding industries imaginable.

This vast diversity of global resources and networking infrastructure allows us to utilize the strengths of each company, learn from each other and create a technological advantage within each industry. Common to every associate in our family of companies, is the profound respect for and the integrity of established industrial principles and practical openness to applications of new technology. With individual company histories spanning decades, and in two cases, more than a century, the IMC and IMCI companies are time-tested leaders in their national and global markets.

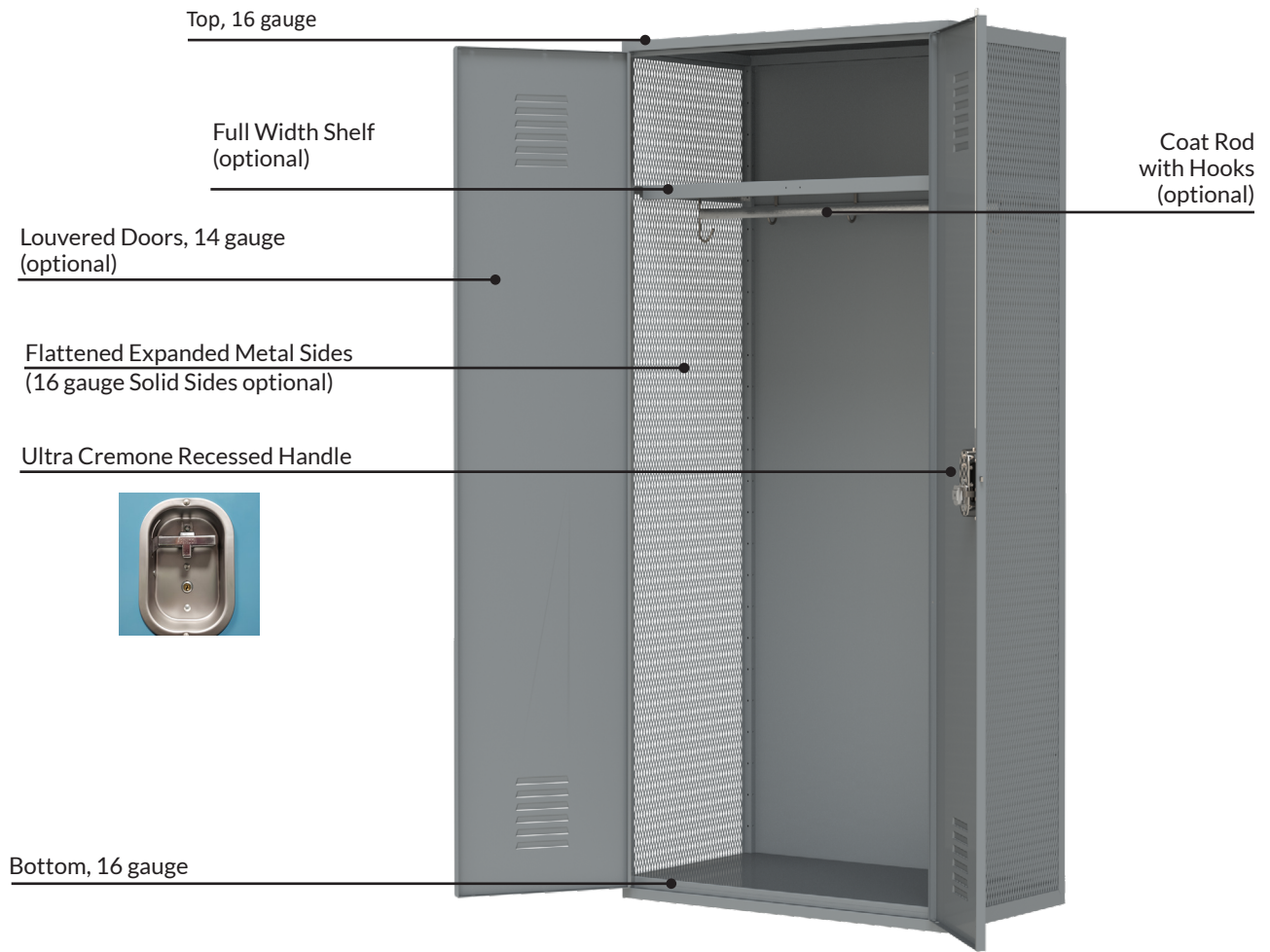


Industrial Manufacturing Company
Industrial Manufacturing Company International

www.mfgco.com

Fully Framed TA-50 Locker

Penco's TA-50 locker is government and military inspired. Available in Knocked Down or Welded construction, this heavy-duty locker is designed to offer a superior level of security and durability while providing efficient storage for bulky military-grade gear.



- Tubular boxed frame provides rigid construction
- 14 gauge doors with continuous hinge provide full access and secure storage
- Flattened Expanded Metal sides of this tactical TA-50 locker allows for maximum ventilation

- 78" overall locker height
- 36", 42", and 48" widths available
- 4" or 6" high Channel Base available

Fully Framed TA-50 Locker

- True Fully Framed construction offers better rigidity
- 36, 42, and 48-inch widths available
- All are 24" deep and 78" high
- Ultra Cremone Recessed Handle for a safer, cleaner look and less freight damage
- Double Doors available in solid, diamonds, or louvers
- Knocked Down or Welded construction
- 4 or 6-inch high Channel Base optional
- All TA-50 lockers are 1 tier
- All TA-50 lockers are 1 wide
- Solid or Flattened Expanded Metal sides available
- 16-gauge continuous hinge



PATRIOT® TA-50 Identification Matrix

Knocked Down and Welded

*Order welded for factory assembled TA-50 locker.

Locker Shell Ordering Guide

| | |
|---|--|
| 1 | Gear, Duty, TA50 and RRDL are ALL WITH Doors |
| 2 | Stadium and Turnout are ALL WITHOUT Doors |
| 3 | ALL TA50 lockers are 1 Tier |
| 4 | ALL TA50 lockers are 1 Wide |
| 5 | Both KD and Welded TA50 lockers are available with channel base, order channel base separately for KD |
| 6 | TA50 lockers are based on a specific configuration, all TA50 lockers come with Hat Shelf, Coat Rod and Hooks |

Patriot TA50 - KD Locker Part Number Identification Matrix

| M | K | # | # | # | * | * | N | D | C | * |
|---------|------|-------|-------|--------|--------------|--------------|--------------|-----------|-------------|-----------|
| Product | Type | Width | Depth | Height | LH Side Vent | RH Side Vent | Channel Base | Door type | Handle Type | Door Vent |



| Product | Type | # Width | # Depth | # Height | * LH Side Vent | * RH Side Vent | * Channel Base | * Door Type | * Handle Type | * Door Vent |
|-------------------|--------|---------|---------|----------|----------------|----------------|---------------------|-------------|-----------------------------------|-------------|
| M = TA50 Military | K = KD | 36 | 24 | 78 | E = Expanded | E = Expanded | N = No channel base | D - Double | C = Ultra Cremone Recessed Handle | D = Diamond |
| | | 42 | | | S = Solid | S = Solid | | | | S = Solid |
| | | 48 | | | | | | | | L = Louvers |

Part Number Examples:

| | |
|-----------------------|---|
| MK362478EENDCD | (M) TA50 - KD - 36" wide x 24" deep x 78" high - Expanded LH Side - Expanded RH Side - No Channel Base - Double Door - Ultra Cremone Recessed Handle - Diamond Door |
| MK422478SSNDCL | (M) TA50 - KD - 42" wide x 24" deep x 78" high - Solid LH Side - Solid RH Side - No Channel Base - Double Door - Ultra Cremone Recessed Handle - Louvers Door |

Patriot TA50 - Welded Locker Part Number Identification Matrix

| M | W | # | # | # | * | * | N | D | C | * |
|---------|------|-------|-------|--------|--------------|--------------|--------------|-----------|-------------|-----------|
| Product | Type | Width | Depth | Height | LH Side Vent | RH Side Vent | Channel Base | Door type | Handle Type | Door Vent |



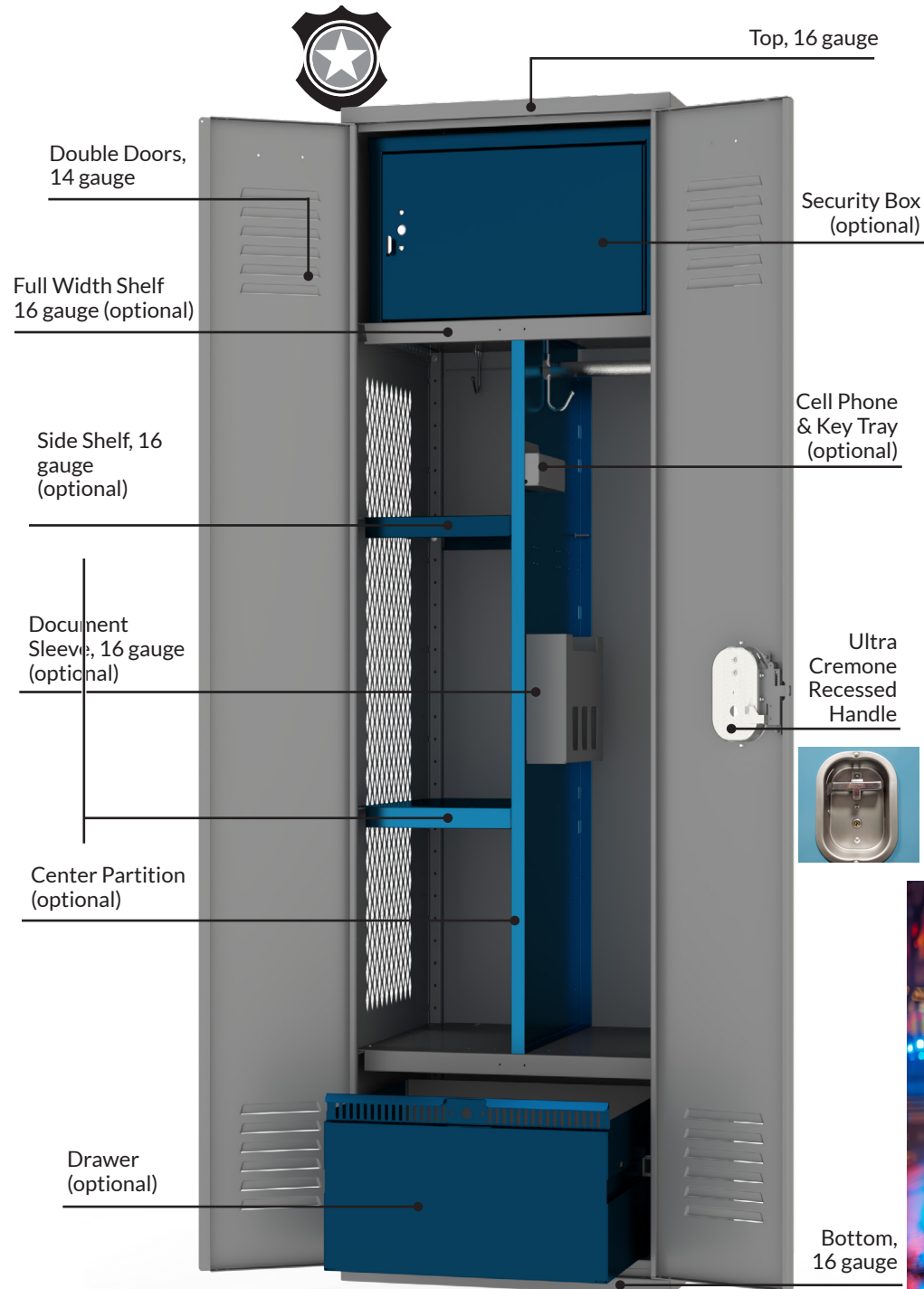
| Product | Type | # Width | # Depth | # Height | * LH Side Vent | * RH Side Vent | * Channel Base | * Door Type | * Handle Type | * Door Vent |
|-------------------|------------|---------|---------|----------|----------------|----------------|---------------------|-------------|-----------------------------------|-------------|
| M = TA50 Military | W = Welded | 36 | 24 | 78 | E = Expanded | E = Expanded | 4 = 4 inch high | D - Double | C = Ultra Cremone Recessed Handle | D = Diamond |
| | | 42 | | | S = Solid | S = Solid | 6 = 6 inch high | | | S = Solid |
| | | 48 | | | | | N = No channel base | | | L = Louvers |

Part Number Examples:

| | |
|-----------------------|---|
| MW422478EENDCD | (M) TA50 - Welded - 42" wide x 24" deep x 78" high - Expanded LH Side - Expanded RH Side - No Channel Base - Double Door - Ultra Cremone Recessed Handle - Diamond Door |
| MW482478SS4DCL | (M) TA50 - Welded - 48" wide x 24" deep x 78" high - Solid LH Side - Solid RH Side - 4" high Channel Base - Double Door - Ultra Cremone Recessed Handle - Louvers Door |

Fully Framed Gear Locker

A properly equipped, double-door Patriot Gear locker can be the ideal solution for a variety of specialized storage challenges. The ample storage areas at both top and bottom of the 24 - 48 inch-wide and 72-inch high locker leaves nearly four feet between the shelves for hanging uniforms and other gear.



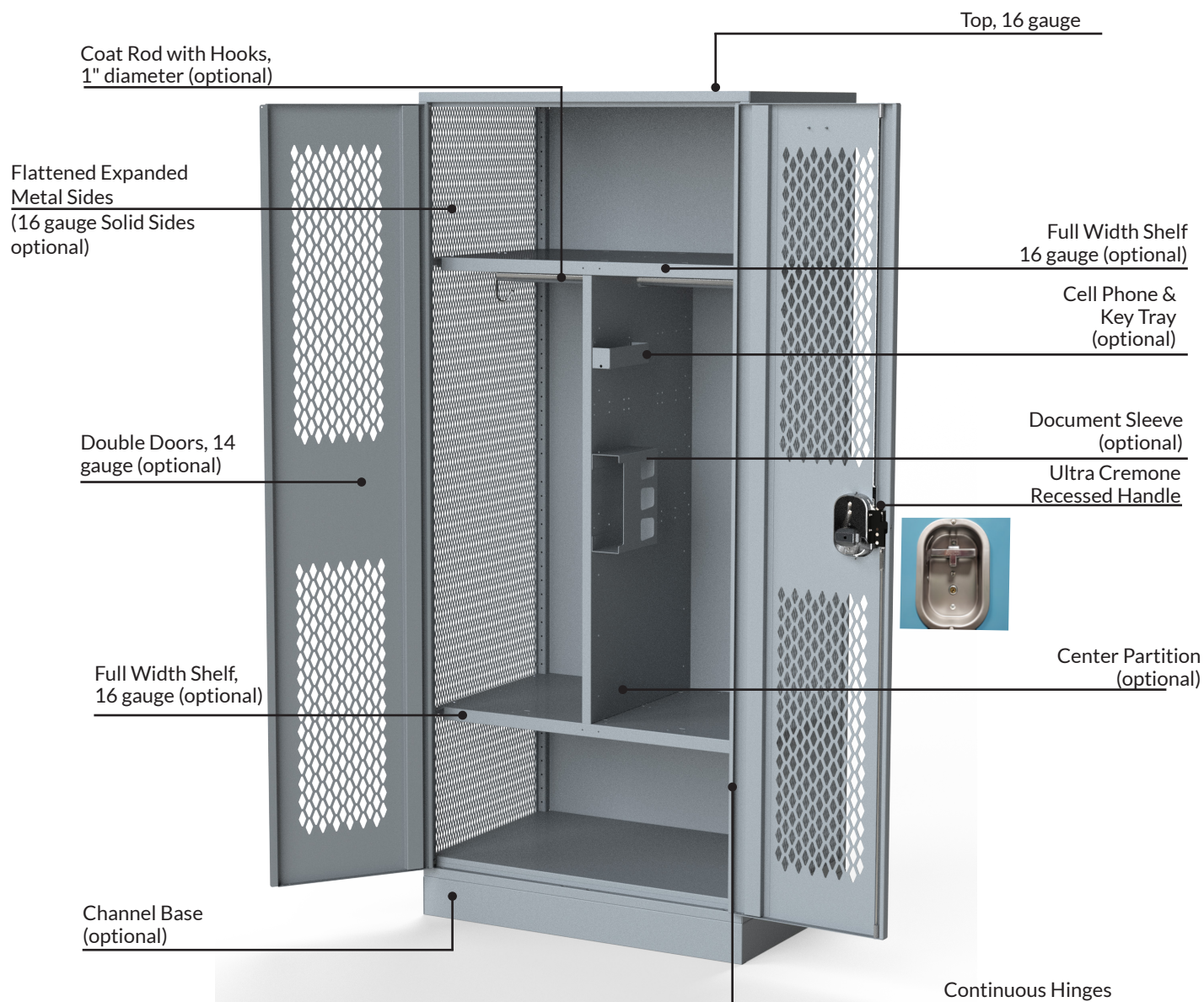
Distinguishing Features:

- True Fully Framed construction offers better rigidity
- Offered in Knocked Down or Welded construction
- 4 or 6-inch high Channel Base available
- 72 or 78-inch heights available
- 18-inch depth available with 18 or 24-inch widths
- 24-inch depth available with 18, 24, 30, 36, 42, or 48-inch widths
- Ultra Cremone Recessed Handle for a safer, cleaner look and less freight damage
- High degree of configurability



Patriot Gear locker is shown above in two-tone colors. Contact a Penco Representative for more details.

Fully Framed Gear Locker



| Gear Locker Easy-Order Pre-Configurations | | | | | |
|---|--------|-------|---|---|---------|
| (Based on popular preferences. For custom configurations, see ordering matrix on pages 10 & 11) | | | | | |
| Part Number | Type | Width | Features | Accessories | Drawing |
| 6GK36247201 | KD | 36 | Solid Sides, No Channel Base, Double Doors with Louvers, Ultra Cremone Recessed Handle, 24" deep, 72" high | Shelf, 2 Coat Rods, Hooks, Partition, 2 Drawers | |
| 6GK48247201 | | 48 | | | |
| 6GW36247201 | Welded | 36 | | | |
| 6GW48247201 | | 48 | | | |
| 6GK36247202 | KD | 36 | Solid Sides, No Channel Base, Double Doors with Louvers, Ultra Cremone Recessed Handle, 24" deep, 72" high | Shelf, 1 Coat Rods, Hooks, 2 Drawers | |
| 6GK48247202 | | 48 | | | |
| 6GW36247202 | Welded | 36 | | | |
| 6GW48247202 | | 48 | | | |
| 6GK24247205 | KD | 24 | Flattened Expanded Metal Sides, No Channel Base, Double Doors with Louvers, Ultra Cremone Recessed Handle, 24" deep, 72" high | Shelf, Coat Rod, Hooks, Security Box | |
| 6GK48247205 | | 48 | | | |
| 6GW24247205 | Welded | 24 | | | |
| 6GW48247205 | | 48 | | | |
| 6GK36247206 | KD | 36 | Diamond Sides, No Channel Base, Double Doors with Louvers, Ultra Cremone Recessed Handle, 24" deep, 72" high | Shelf, Coat Rod, Hooks, Two Security Boxes | |
| 6GK48247206 | KD | 48 | | | |
| 6GW36247206 | Welded | 36 | | | |
| 6GW48247206 | Welded | 48 | | | |
| 6GK24247207 | KD | 24 | Flattened Expanded Metal Sides, No Channel Base, Double Doors with Louvers, Ultra Cremone Recessed Handle, 24" deep, 72" high | Shelf, Coat Rod, Hooks, 3 Half Shelves | |
| 6GK36247207 | KD | 36 | | | |
| 6GW24247207 | Welded | 24 | | | |
| 6GW36247207 | Welded | 36 | | | |
| 6GK24247208 | KD | 24 | Flattened Expanded Metal Sides, No Channel Base, Double Doors with Louvers, Ultra Cremone Recessed Handle, 24" deep, 72" high | Shelf, Coat Rod, Hooks | |
| 6GK36247208 | KD | 36 | | | |
| 6GW24247208 | Welded | 24 | | | |
| 6GW36247208 | Welded | 36 | | | |

Knocked Down



| Locker Shell Ordering Guide | |
|-----------------------------|---|
| 1 | Gear, Duty, TA50 and RRDL are ALL WITH Doors |
| 2 | Stadium and Turnout are ALL WITHOUT Doors |
| 3 | Lockers over 24 inches wide are only available in 24 inches in depth |
| 4 | ALL Gear lockers come with ONLY the Ultra Cremone Recessed Handle. No other handle is available at this time. |
| 5 | ALL 18" wide Gear lockers are Single Door ONLY. All 24" wide Gear lockers are available in both Single Door and Double Door. All Gear lockers over 24" wide are Double Door ONLY. |
| 6 | Diamond Sides are NOT available for 78" high lockers |
| 7 | ALL Gear lockers are 1 Tier |
| 8 | ALL Gear lockers are 1 Wide |
| 9 | Both KD and Welded Gear lockers are available with channel base |
| 10 | Gear lockers are totally configurable, for that reason, hat shelf and coat rods need to be order separately |

*Order welded for factory assembled Gear locker.

| Patriot GEAR - KD Locker Part Number Identification Matrix | | | | | | | | | | |
|---|--------|---------|---------|--------------|--|-------------------------------|------------------------|-------------|--|-------------|
| G | K | # | # | # | * | * | N | * | * | * |
| Product | Type | Width | Depth | Height | LH Side Vent | RH Side Vent | Channel Base | Door type | Handle Type | Door Vent |
| Product | Type | # Width | # Depth | # Height | * LH Side Vent | * RH Side Vent | * Channel Base | * Door Type | * Handle Type | * Door Vent |
| G = Gear | K = KD | 18 | 18 | 72 and 78 | D = Diamond (see #6 above) | D = Diamond (see #6 above) | N = No channel base | S = Single | C = Ultra Cremone Recessed Handle | D = Diamond |
| | | | 24 | | | | | | | |
| | | 24 | 18 | E = Expanded | E = Expanded | D - Double | | S = Solid | | |
| | | | 30 | | | | | | | |
| | | 36 | 24 | S = Solid | S = Solid | L = Louvers | | | | |
| | | 42 | | | | | | | | |
| | | 48 | | | | | | | | |
| | | | | | Part Number Examples: | | | | | |
| GK362472DSNDCL | | | | | Gear - KD - 36" wide x 24" deep x 72" high - Diamond LH Side - Solid RH Side - No Channel Base - Double door - Ultra Cremone Recessed Handle - Louver Door | | | | | |

Welded



| Locker Shell Ordering Guide | |
|-----------------------------|---|
| 1 | Gear, Duty, TA50 and RRDL are ALL WITH Doors |
| 2 | Stadium and Turnout are ALL WITHOUT Door |
| 3 | Lockers over 24 inches wide are only available in 24 inches in depth |
| 4 | ALL Gear lockers come with ONLY the Ultra Cremone Recessed Handle. No other handle is available at this time. |
| 5 | ALL 18" wide Gear lockers are Single Door ONLY. All 24" wide Gear lockers are available in both Single Door and Double Door. All Gear lockers over 24" wide are Double Door ONLY. |
| 6 | Diamond Sides are NOT available for 78" high lockers |
| 7 | ALL Gear lockers are 1 Tier |
| 8 | ALL Gear lockers are 1 Wide |
| 9 | Both KD and Welded Gear lockers are available with Channel Base |
| 10 | Gear lockers are totally configurable, for that reason, hat shelf and coat rods need to be order separately |

| Patriot GEAR - Welded Locker Part Number Identification Matrix | | | | | | | | | | |
|---|------------|-----------|-----------|------------------------|--|-------------------------------|-----------------|-------------|--|-------------|
| G | W | # | # | # | * | * | N | * | * | * |
| Product | Type | Width | Depth | Height | LH Side Vent | RH Side Vent | Channel Base | Door type | Handle Type | Door Vent |
| Product | Type | # Width | # Depth | # Height | * LH Side Vent | * RH Side Vent | * Channel Base | * Door Type | * Handle Type | * Door Vent |
| G = Gear | W = Welded | 18 | 18 | 72 and 78 | D = Diamond (see #6 above) | D = Diamond (see #6 above) | 4 = 4 inch high | S = Single | C = Ultra Cremone Recessed Handle | D = Diamond |
| | | | 24 | | | | | | | |
| | | 24 | 18 | | E = Expanded | E = Expanded | 6 = 6 inch high | D - Double | | S = Solid |
| | | | 24 | | | | | | | |
| | | | | 30 | | | | | | |
| | | | | 36 | | | | | | |
| | | 42 | | | | | | | | |
| 48 | | S = Solid | S = Solid | N = No channel base | L = Louvers | | | | | |
| Part Number Examples: | | | | | | | | | | |
| GW362472DS4DCL | | | | | Gear - Welded - 36" wide x 24" deep x 72" high - Diamond LH Side - Solid RH Side - 4" Channel Base - Double Door - Ultra Cremone Recessed Handle - Louver Door | | | | | |

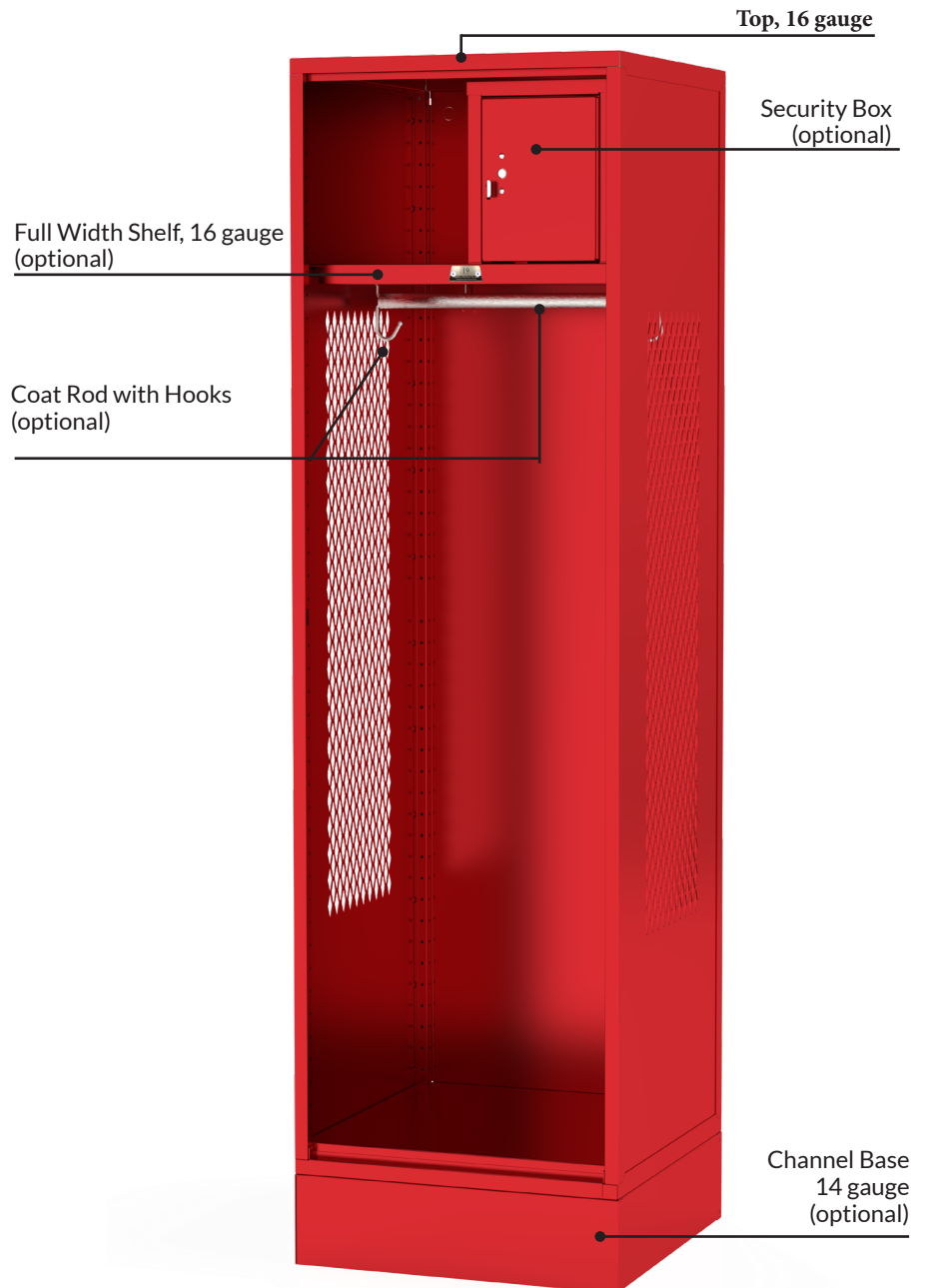
Fully Framed Turnout Locker



Turnout lockers give you the advantage of instant access to mission gear, and Patriot accessories like drawers, security boxes or footlockers give you secure storage for items that are best kept under lock and key.

Whether the Patriot you specify has doors or not, the same flexibility is built into each one. Gear and Turnout accessories are designed for use in either type locker.

Balance the advantage of an open front locker with secure storage by adding a Security Box, Drawers or a Footlocker.



Fully Framed Turnout Locker

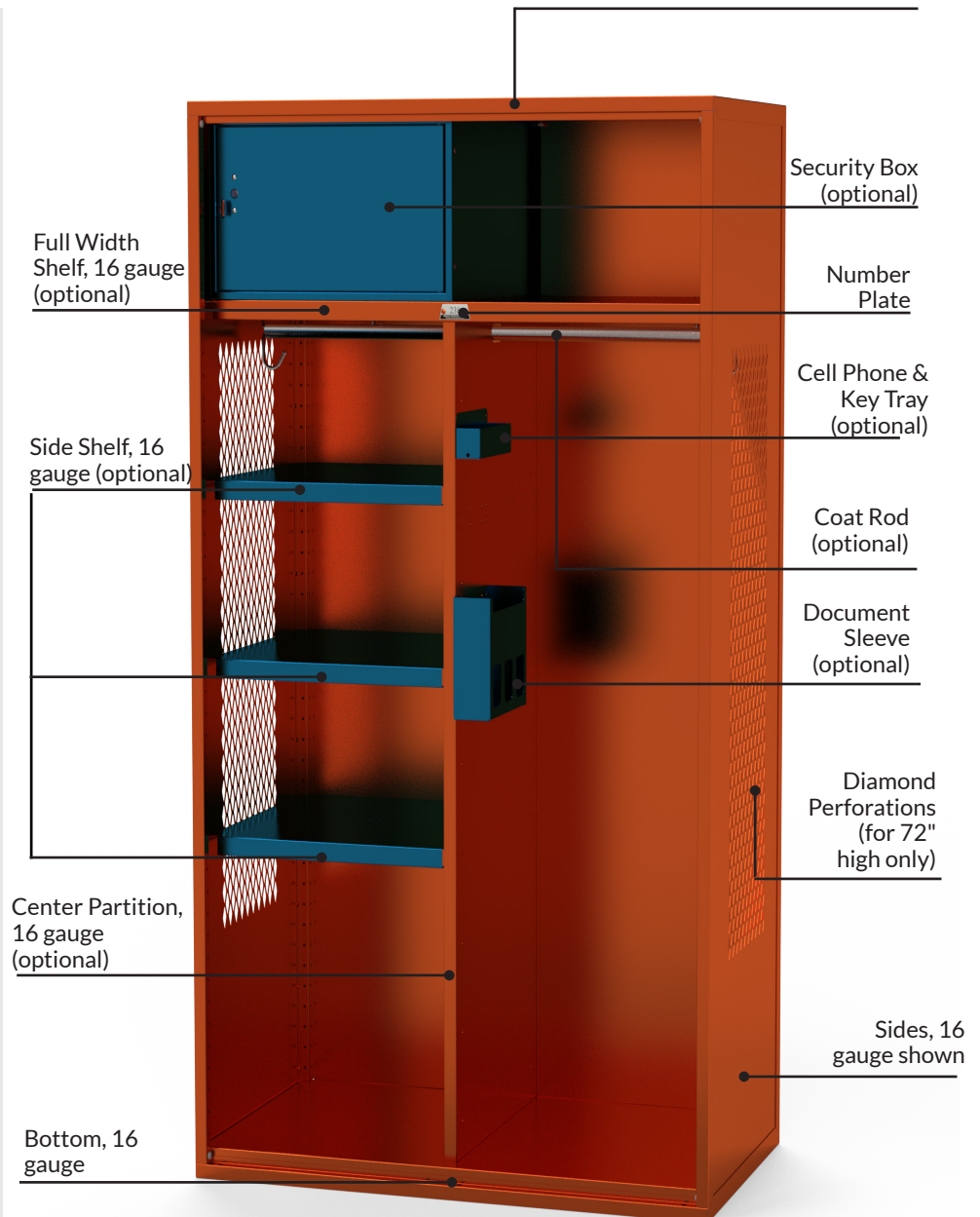
The key to any turnout locker is the ability to grab and go. The Patriot Turnout Locker puts everything from flight gear to EMS equipment within reach. The Patriot Turnout Locker shares the same heavy-gauge steel construction as Gear lockers but have an open front and smooth frame, allowing users to retrieve equipment in a flash.



Top, 16 gauge

Distinguishing Features:

- True fully framed construction offers better rigidity
- Offered in Knocked Down or Welded construction
- 4 or 6-inch high Channel Base available
- Open front and hemmed frame
- 24-inch deep available in 18, 24, 30, 36, 42, or 48-inch widths
- 18-inch deep locker available in 18 or 24-inch widths
- Available in 72 or 78-inch heights
- Number plates mount to the shelf face for easy visibility



Penco Turnout locker is shown above in two-tone using standard colors. For more information about two-tone lockers, contact your Penco Representative.

Fully Framed Turnout Identification Matrix

| Locker Shell Ordering Guide | |
|-----------------------------|--|
| 1 | Gear, Duty, TA50 and RRDL are ALL WITH Doors |
| 2 | Stadium and Turnout are ALL WITHOUT Door |
| 3 | Lockers over 24 inches wide are only available in 24 inches in depth |
| 4 | If ordering 78" high lockers - Diamond Sides are NOT available |

| | |
|---|--|
| 5 | ALL Turnout lockers are 1 Tier |
| 6 | ALL Turnout lockers are 1 Wide |
| 7 | Both KD and Welded Turnout lockers are available with Channel Base |
| 8 | Turnout lockers are totally configurable, for that reason, hat shelf and coat rods need to be order separately |

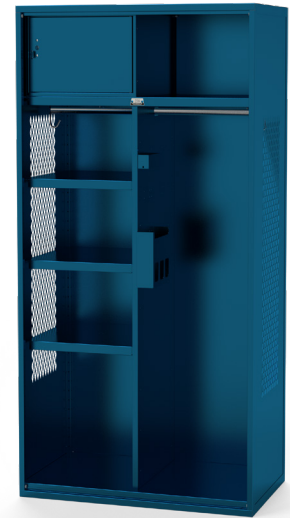
| Patriot TURNOUT - KD Locker Part Number Identification Matrix | | | | | | | |
|--|------|-------|-------|--------|--------------|--------------|--------------|
| T | K | # | # | # | * | * | N |
| Product | Type | Width | Depth | Height | LH Side Vent | RH Side Vent | Channel Base |

*Order Welded for factory assembled Turnout locker.

| Product | Type | # Width | # Depth | # Height | * LH Side Vent | * RH Side Vent | * Channel Base | |
|-------------|--------|---------|---------|-----------|--------------------------------|--------------------------------|---------------------|-----------|
| T = Turnout | K = KD | 18 | 18 | 72 and 78 | D = Diamond (see # 4 above) | D = Diamond (see # 4 above) | N = No channel base | |
| | | | 24 | | | | | |
| | | 24 | 18 | | E = Expanded | E = Expanded | | |
| | | | 24 | | | | | |
| | | | | | | | | 30 |
| | | | | | | | | 36 |
| | | | | | 42 | | | |
| | | | | | 48 | S = Solid | | S = Solid |

Part Number Examples:

| | |
|--------------------|--|
| TK181872DSN | Turnout - KD - 18" wide x 18" deep x 72" high - Diamond LH Side - Solid RH Side - No Channel Base |
| TK482472ESN | Turnout - KD - 48" wide x 24" deep x 72" high - Expanded LH Side - Solid RH Side - No Channel Base |



| Patriot TURNOUT - Welded Locker Part Number Identification Matrix | | | | | | | |
|--|------|-------|-------|--------|--------------|--------------|--------------|
| T | W | # | # | # | * | * | N |
| Product | Type | Width | Depth | Height | LH Side Vent | RH Side Vent | Channel Base |

| Product | Type | # Width | # Depth | # Height | * LH Side Vent | * RH Side Vent | * Channel Base |
|-------------|------------|---------|---------|-----------|----------------|----------------|---------------------|
| T = Turnout | W = Welded | 18 | 18 | 72 and 78 | D = Diamond | D = Diamond | 4 = 4 inch high |
| | | | 24 | | | | |
| | | 24 | 18 | | E = Expanded | E = Expanded | 6 = 6 inch high |
| | | | 24 | | | | |
| | | | 30 | | | | |
| | | | 36 | | | | |
| | | | 42 | 24 | S = Solid | S = Solid | N = No Channel Base |
| | | | 48 | | | | |

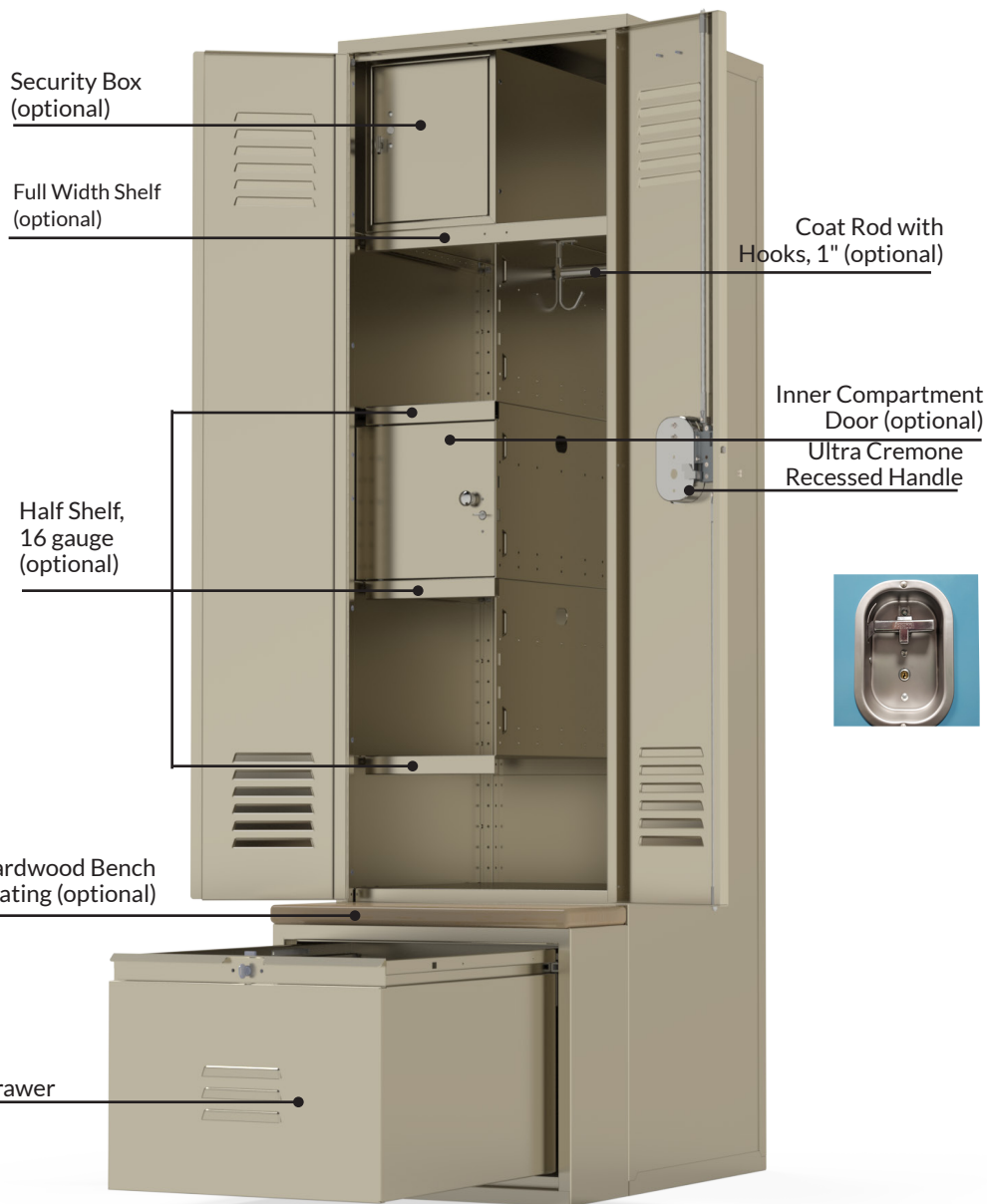
Part Number Examples:

| | |
|--------------------|--|
| TW422472SEN | Turnout - WD - 42" wide x 24" deep x 72" high - Solid LH Side - Expanded RH Side - No Channel Base |
| TW302472SS4 | Turnout - WD - 30" wide x 24" deep x 72" high - Solid LH Side - Solid RH Side - 4" Channel Base |



Fully Framed Duty Locker

With the special needs of law enforcement in mind, the Patriot Duty Locker has a 16-gauge welded shell, 16-gauge drawer, and provides 3.4 cubic feet of usable storage in the drawer base. The 33 or 36-inch deep base optionally accepts individual or continuous lengths of Hardwood Bench Seating.



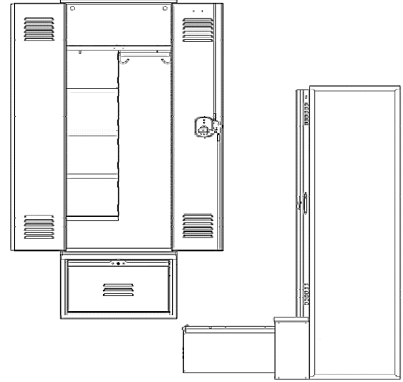
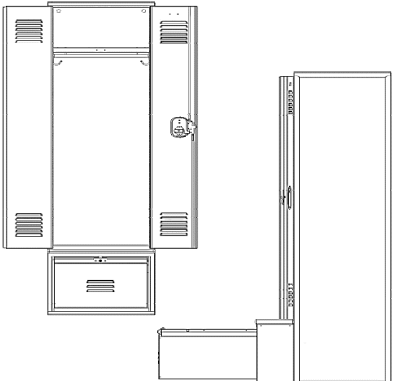
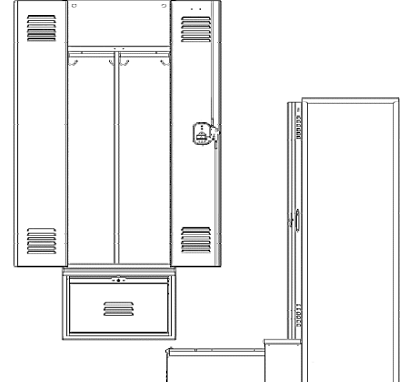
Distinguishing Features:

- Offered in Knocked Down or Welded construction
- Optional 16 gauge Interior Divider and Side Shelf
- 78 or 90-inch Heights available
- 18 or 24-inch widths available
- Optional Coat Rod and Hooks on garment side
- Optional lockable Security Box
- Back punched for electrical wiring
- Standard Drawer Base for all Duty lockers
- Ultra Cremone Recessed Handle

When timing is crucial, Duty lockers answer the call of law enforcement and security professionals. The customizable features of Duty lockers help users find critical items quickly.

Order welded for factory assembled models.

Duty Locker: Easy-Order Configurations

| Duty Locker Easy-Order Pre-Configurations | | | | |
|--|------|---|--|---|
| (Based on popular preferences. For custom configurations, see ordering matrix on pages 17) | | | | |
| Part Number | Type | Features | Accessories | Drawing |
| 6DK24249009 | KD | 24" wide, 24" Deep, 90" high. Solid Sides, no Channel Base, Double Doors, Ultra Cremone Recessed Handles, and Louvers | Top Shelf, Coat Rod, Hooks, 4 Half Shelves, 9 inch Extended Front |  |
| 6DW24249009 | W | | Top Shelf, Coat Rod, Hooks, 4 Half Shelves, 9 inch Extended Front | |
| 6DK24249010 | KD | 24" wide, 24" Deep, 90" high. Solid Sides, no Channel Base, Double Doors, Ultra Cremone Recessed Handles, and Louvers | Top Shelf, Coat Rod, Hooks, 9 inch Extended Front |  |
| 6DW24249010 | W | | Top Shelf, Coat Rod, Hooks, 9 inch Extended Front | |
| 6DK24249011 | KD | 24" wide, 24" Deep, 90" high. Solid Sides, no Channel Base, Double Doors, Ultra Cremone Recessed Handles, and Louvers | Top Shelf, Center Partition, 2 Coat Rods, Hooks, 9 inch Extended Front |  |
| 6DW24249011 | W | | Top Shelf, Center Partition, 2 Coat Rods, Hooks, 9 inch Extended Front | |



PATRIOT® Duty Identification Matrix



| Locker Shell Ordering Guide | |
|-----------------------------|--|
| 1 | Gear, Duty, TA50 and RRDL are ALL WITH Doors |
| 2 | Stadium and Turnout are ALL WITHOUT Door |
| 3 | ALL Duty lockers come with ONLY the Ultra Cremone Recessed Handle. No other handle is available at this time. |
| 4 | ALL 18" wide Duty lockers are Single Door ONLY. All 24" wide Duty lockers are available in both Single Door and Double Door. |

| | |
|-----|--|
| 5 | Ordering a Duty locker means a Drawer Base Unit will be provided, if drawer base is not needed order a Gear locker. Examples: 90" high locker is a 72" locker with an nominal 18" high drawer base. 78" high locker will be a 60" locker with an nominal 18" high drawer base. |
| 6 | ALL Duty lockers are 1 Tier |
| 7 | ALL Duty lockers are 1 Wide |
| 8 | ALL Duty lockers come with a Drawer Base Unit |
| 9 | Duty lockers are NOT available with channel base because of the drawer base unit |
| 10 | Duty lockers are totally configurable, for that reason, hat shelf and coat rods need to be order separately |
| 11 | When ordering a Front Extension for the drawer base unit the final depth of the base will be as noted below: |
| 11a | Drawer base unit with a 9" extension on a 24" deep locker will be 33" deep |
| 11b | Drawer base unit with a 12" extension on a 24" deep locker will be 36" deep |

*Order welded for factory assembled Duty locker.

| Patriot DUTY - KD Locker Part Number Identification Matrix | | | | | | | | | | |
|---|------|-------|-------|--------|--------------|--------------|-----------------------|-----------|-------------|-----------|
| D | K | # | # | # | S | S | * | * | * | * |
| Product | Type | Width | Depth | Height | LH Side Vent | RH Side Vent | Drawer Base Extension | Door type | Handle Type | Door Vent |

| Product | Type | # Width | # Depth | # Height | * LH Side Vent | * RH Side Vent | Drawer Base Ext | * Door Type | * Handle Type | * Door Vent |
|----------|--------|---------|---------|----------|----------------|----------------|---|-------------|--|-------------|
| D = Duty | K = KD | 18 | 24 | 78 | S = Solid | S = Solid | N = 9" front extension (See #9 above for details) | S = Single | C = Ultra Cremone Recessed Handle | D = Diamond |
| | | | | 90 | | | E = 12" front extension (See #9 above for details) | D = Double | | S = Solid |
| | | 24 | | 78 | | | | | | L = Louvers |
| | | | | 90 | | | | | | |

Part Number Examples:

| | |
|-----------------------|---|
| DK182490SSESL | Duty - KD - 18" wide x 24" deep x 90" high (means 72" lkr with 18" high Drawer Base) - Solid LH Side - Solid RH Side - (E) 12" Front Drawer Extension - Single Door - Ultra Cremone Recessed Handle - Louver Door |
| DK242478SSNDCS | Duty - KD - 24" wide x 24" deep x 78" high (means 60" lkr with 18" high Drawer Base) - Solid LH Side - Solid RH Side - (N) 9" Front Drawer Extension - Double Door - Ultra Cremone Recessed Handle - Solid Door |

| Patriot DUTY - Welded Locker Part Number Identification Matrix | | | | | | | | | | |
|---|------|-------|-------|--------|--------------|--------------|-----------------------|-----------|-------------|-----------|
| D | W | # | # | # | S | S | * | * | * | * |
| Product | Type | Width | Depth | Height | LH Side Vent | RH Side Vent | Drawer Base Extension | Door type | Handle Type | Door Vent |

| Product | Type | # Width | # Depth | # Height | * LH Side Vent | * RH Side Vent | Drawer Base Ext | * Door Type | * Handle Type | * Door Vent |
|----------|------------|---------|---------|-------------|----------------|----------------|---|-------------|--|-------------|
| D = Duty | W = Welded | 18 | 24 | 78 | S = Solid | S = Solid | N = 9" front extension (See #9 above for details) | S = Single | C = Ultra Cremone Recessed Handle | D = Diamond |
| | | | | 90 | | | E = 12" front extension (See #9 above for details) | D = Double | | S = Solid |
| | | 78 | | L = Louvers | | | | | | |
| | | 90 | | | | | | | | |

Part Number Examples:

| | |
|-----------------------|--|
| DW182478SSNSCL | Duty - Welded - 18" wide x 24" deep x 78" high (means 60" lkr with 18" high Drawer Base) - Solid LH Side - Solid RH Side - (N) 9" Front Drawer Extension - Single Door - Ultra Cremone Recessed Handle - Louver Door |
| DW242490SSEDCS | Duty - Welded - 24" wide x 24" deep x 90" high (means 72" lkr with 18" high Drawer Base) - Solid LH Side - Solid RH Side - (E) 12" Front Drawer Extension - Double Door - Ultra Cremone Recessed Handle - Solid Door |



Fully Framed: Knockdown



Locker Shell Ordering Guide

| | |
|---|--|
| 1 | ALL RRDL lockers are Double Door ONLY with Ultra Cremone Recessed Handle |
| 2 | Both Knockdown and Welded RRDL lockers are available with Channel Base (*order channel base separately for KD) |
| 3 | ALL RRDL lockers are 1 Wide |
| 4 | RRDL do not come with any internal components (NO coat rod, NO hooks) |
| 5 | ONLY the RRDL will have indicators of what tier is available |

Patriot RRDL - KD Locker Part Number Identification Matrix

| R | K | # | # | # | * | * | N | D | C | * | * |
|----------|--------|-------|-------|--------|--------------|--------------|---------------------|------------|-----------------------------------|-------------|------|
| Product | Type | Width | Depth | Height | LH Side Vent | RH Side Vent | Channel Base | Door Type | Handle Type | Door Vent | Tier |
| R = RRDL | K = KD | 24 | 24 | 72 | E = Expanded | E = Expanded | N = No channel base | D - Double | C = Ultra Cremone Recessed Handle | D = Diamond | 2 |
| | | 30 | 24 | 72 | S = Solid | S = Solid | | | | S = Solid | 3 |
| | | 36 | 24 | 72 | D = Diamond | D = Diamond | | | | L = Louvers | 4 |

Part Number Examples:

| | |
|------------------------|--|
| RK242472EENDCS4 | RRDL - KD - 24" wide x 24" deep x 72" high - Expanded LH Side - Expanded RH Side - No Channel Base - Double Door - Ultra Cremone Recessed Handle - Solid Door - 4 Tier |
| RK302472SSND2 | RRDL - KD - 30" wide x 24" deep x 72" high - Solid LH Side - Solid RH Side - No Channel Base - Double Door - Ultra Cremone Recessed Handle - Diamond Door - 2 Tier |

Fully Framed: Knockdown

The Rapid Response Duffel Locker is designed to meet the needs of first responders for the secure and economical storage of their gear. Whether called to action or waiting for their return, these lockers will keep users' belongings and gear safe and ready for that critical first response.

- True fully framed construction offers better rigidity
- Offered in both Knockdown or Welded construction
- 24, 30 and 36 inch widths available
- 24 inches deep
- 72 inches high
- Ultra Cremone Recessed Handle for a safer, cleaner look and less freight damage
- Available in 2 Tier, 3 Tier and 4 Tier
- 4 or 6 inch Channel Base available on both Knockdown and Welded versions



- Individually locked compartments for quick user access
- Ease of quoting and ordering
- Sized to fit pre-loaded and oversized duffel bags, backpacks, and cases
- Rigid frame design does not require large frame members at top and bottom of locker resulting in more storage space inside the locker

Fully Framed: Welded



Locker Shell Ordering Guide

| | |
|---|---|
| 1 | ALL RRDL lockers are Double Door ONLY with Ultra Cremone Recessed Handle |
| 2 | Both Knockdown and Welded RRDL lockers are available with Channel Base (order channel base separately for KD) |
| 3 | ALL RRDL lockers are 1 Wide |
| 4 | RRDL do not come with any internal components (NO coat rod, NO hooks) |
| 5 | ONLY the RRDL will have indicators of what tier is available |

Patriot RRDL - Welded Locker Part Number Identification Matrix

| R | W | # | # | # | * | * | N | D | C | * | * |
|---------|------|-------|-------|--------|--------------|--------------|--------------|-----------|-------------|-----------|------|
| Product | Type | Width | Depth | Height | LH Side Vent | RH Side Vent | Channel Base | Door Type | Handle Type | Door Vent | Tier |

| Product | Type | # Width | # Depth | # Height | LH Side Vent | RH Side Vent | * Channel Base | Door Type | Handle Type | Door Vent | Tier |
|----------|------------|---------|---------|----------|--------------|--------------|---------------------|------------|-----------------------------------|-------------|------|
| R = RRDL | W = Welded | 24 | 24 | 72 | E = Expanded | E = Expanded | 4 = 4 inch high | D - Double | C = Ultra Cremone Recessed Handle | D = Diamond | 2 |
| | | 30 | | | S = Solid | S = Solid | 6 = 6 inch high | | | S = Solid | 3 |
| | | 36 | | | | | N = No channel base | | | L = Louvers | 4 |

Part Number Examples:

| | |
|------------------------|--|
| RW242472EENDCS4 | RRDL - KD - 24" wide x 24" deep x 72" high - Expanded LH Side - Expanded RH Side - No channel base - Double Door - Ultra Cremone Recessed Handle - Solid Door - 4 Tier |
| RW362472SS4DCD3 | RRDL - KD - 36" wide x 24" deep x 72" high - Solid LH Side - Solid RH Side - 4 inch channel base - Double Door - Ultra Cremone Recessed Handle - Diamond Door - 3 Tier |

Fully Framed: Welded

The Rapid Response Duffel Locker is designed to meet the needs of first responders for the secure and economical storage of their gear. Whether called to action or waiting for their return, these lockers will keep users' belongings and gear safe and ready for that critical first response.

Diamond Perforations

- True fully framed construction offers better rigidity
- Offered in both Knockdown or Welded construction
- 24, 30 and 36 inch widths available
- 24 inches deep
- 72 inches high
- Ultra Cremone Recessed Handles on all tiers for a safer, cleaner look and less freight damage
- Available in 2 Tier, 3 Tier and 4 Tier
- 4 or 6 inch high Channel Base available on both Knockdown and Welded versions

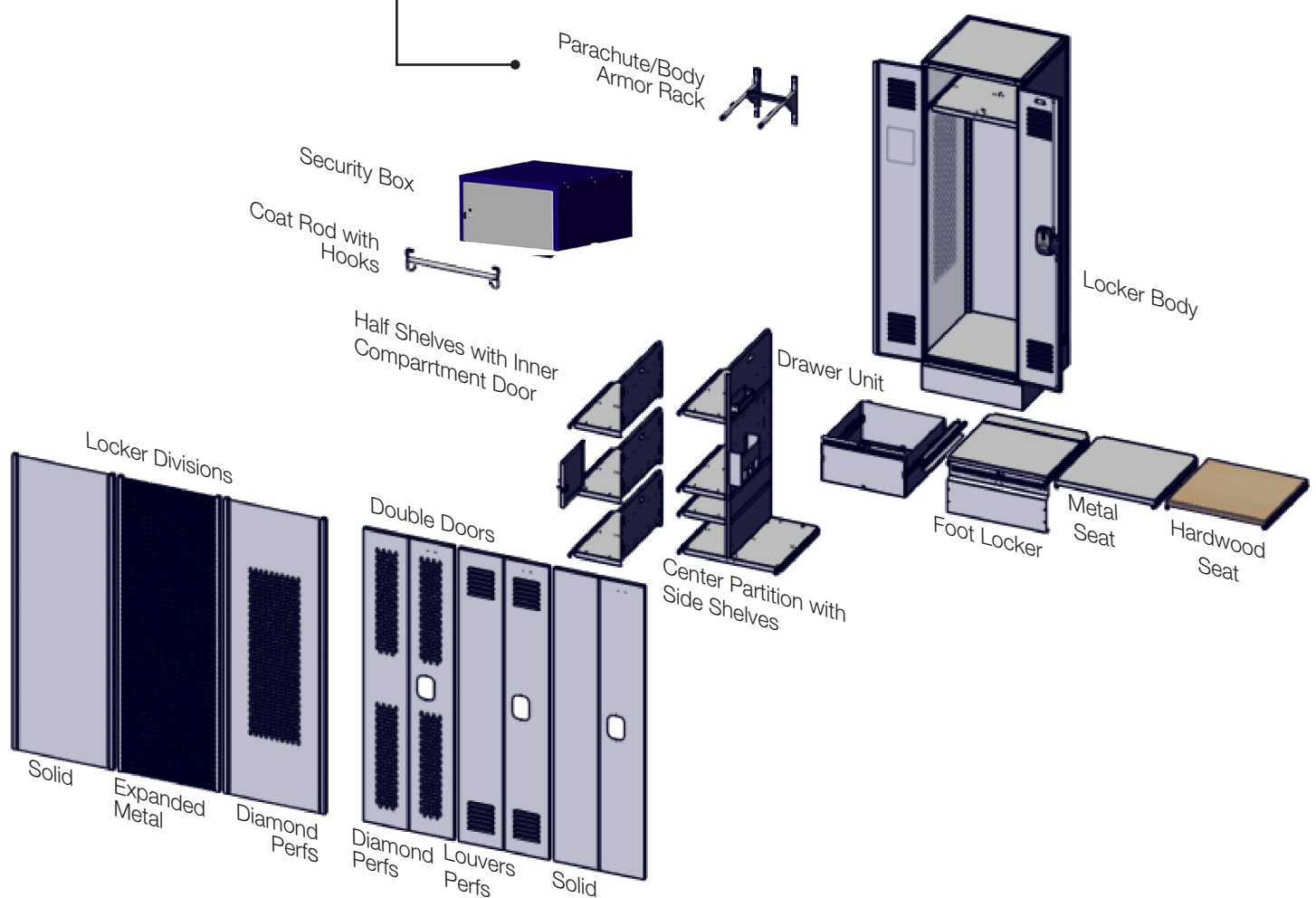


- Individually locked compartments for quick user access
- Ease of quoting and ordering
- Sized to fit pre-loaded and oversized duffel bags, backpacks, and cases
- Rigid frame design does not require large frame members at top and bottom of locker resulting in more storage space inside the locker

Fully Framed Gear & Turnout Lockers

Configure and Build to Suit

One of the key strengths of the Patriot is its flexibility and modular accessories. Each Patriot accessory is designed for use in any of the four Patriot Locker bodies.



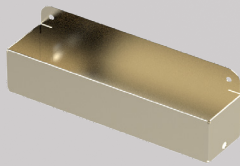
For more information about locker configurations, contact your Penco Representative.

Locker Accessories (Not for TA-50* or Stadium*)

**Exception: The 4 or 6-inch high Channel Base is still an option for both TA-50 and Stadium*

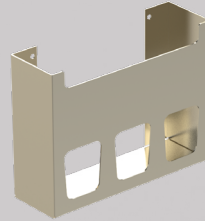
The accessories listed here will help you to personalize and organize the lockers to fit your needs.

Cell Phone/Key Tray:



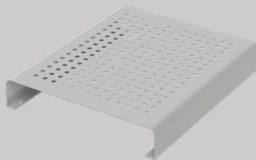
8-inch (203.2 mm) x 2-inch (50.8 mm) x 2-inch (50.8 mm) mounted to center partition or half shelf. If either of these items are being ordered, you can attach it to the side of the locker using 2 side rails (ordered separately)

Document Sleeve:



Formed from 16 gauge steel, the document sleeve is available in either a vertical or horizontal configuration for efficient storage of portfolios, note pads or binders.

Boot Tray:



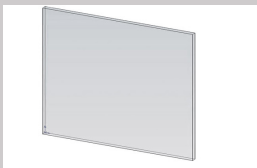
The 12" x 14" boot tray provides air space between soiled or wet footwear and the locker bottom. A series of round hole perforations are used to promote airflow and the tray is kept from marring the locker finish by rubber pads. Not for use on 18" wide lockers with center partition.

Coat Rod with hooks - Full Length:



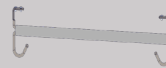
Using coat rod hooks mounted to shelf. 18", 24", 30", 36", 42", 48" width sizes correlating to the width of the locker.

Acrylic Mirror:



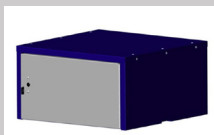
The adhesive-backed mirror resists breakage and can be permanently mounted wherever you need it.

Coat Rod with hooks - Half Length:



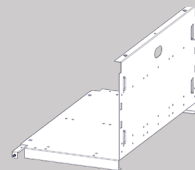
Using coat rod hooks mounted to shelf and used on lockers with center partition or half shelves. 9" for 18" wide locker, 12" for 24" wide locker, 15" for 30" wide locker, 18" for 36" wide locker, 21" for 42" wide locker and 24" for 48" wide locker.

Security Box:



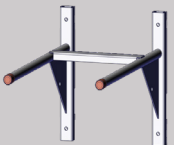
Available in many widths, the security box uses a 16 gauge lockable door, 16-gauge side panels and top panel. Welded door frame with a continuous hinge. Uses any standard box locker padlock or built in lock. (lock sold separately)

Half Shelf:



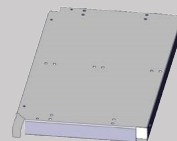
L-shaped half shelf, 16 gauge steel. Attaches securely on one side with a side rail and the flanged partition mounts to shelf or half shelf above.

Parachute/Body Armor Rack:



Formed from 3/4-inch diameter, heavy wall steel tube. Reinforced by 14-gauge gussets. Mounted securely to rear of locker. 180-pound capacity. Rack is attach by drilling holes in the locker back and using the nuts, bolts and washers supplied. If ordering welded this will be done at factory, if ordering knockdown must be done on site.

Side Shelf:



Shelf is only used with center partitions when shelves are needed on either side. 9" for 18" wide locker, 12" for 24" wide locker, 15" for 30" wide locker, 18" for 36" for locker, 21" for 42" wide locker and 24" for 48" wide locker.

Garment Separator:



Can be used as an alternative to the optional Coat Rod. Mounts to shelf.

Single Prong:



Single Prong - mounts to the inside shelf.

Locker Accessories (Not for TA-50* or Stadium*)

**Exception: The 4 or 6-inch high Channel Base is still an option for both TA-50 and Stadium*

Channel Base:



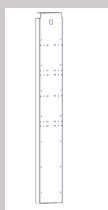
4-inch or 6-inch high. 14 gauge steel formed in a "C" channel that attaches to locker bottom.

Full Width Shelf:



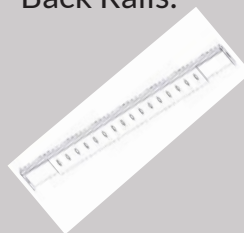
16 gauge steel. Attaches securely to mounting side rails. Comes with 2 Back Hooks. Order Back Rails when additional shelf support is needed.

Center Partition:



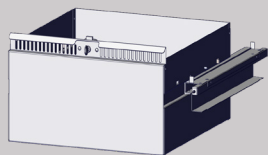
16 gauge steel with a flanged front. Attaches securely to shelf and locker bottom or additional lower shelf. (Not for use with footlocker or seat). Mounting holes for side shelves provided on nominal 6 inch centers. Available in 18x51" or 24x51" KD or W.

Back Rails:



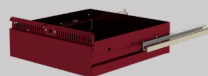
Back Rails are used with full width shelves when extra support is needed. Order one back rail per full width shelf. The size of the back rail correlates with the width of the shelf.

Bottom 12" High Drawer:



12 inch high and constructed of 16 gauge sheet steel. Provides easy access to files and equipment without taking up valuable space when not in use. Rated at 250 lb. capacity for performance and durability. Must order shelf for above this drawer. (lock sold separately)

Intermediate 6" High Drawer:



6 inch high and constructed of 16 gauge sheet steel. Can be stacked inside locker. Provides easy access to files and equipment without taking up valuable space when not in use. Rated at 250 lb. capacity for performance and durability. Must order shelf for above the first drawer. If ordering multiple drawers and each drawer needs to be locked a shelf must be ordered for each drawer. (lock sold separately)

Wood Seat Option:



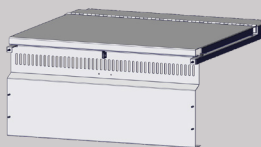
Used in place of a footlocker or drawer unit, the 1-1/4" thick solid hardwood bench provides a sturdy seating surface with open storage underneath for stowing larger bags or equipment.

Metal Seat Option:



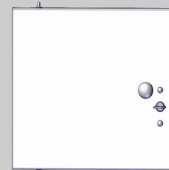
Used in place of a footlocker or drawer unit, the 16 gauge metal seat provides a sturdy seating surface with open storage underneath for stowing larger bags or equipment.

Footlocker:



The reinforced lid of the footlocker features a continuous hinge and also serves as a seat. The front panel includes a single point latch with a padlock strike plate for security and vertical ventilation. (lock sold separately)

Inner Compartment Door:



Used only with "L" shaped half shelf. 16 gauge steel. (lock sold separately)

Additional Accessories:

Standard Penco locker accessories such as vertical fillers, continuous slope hood, locker room benches and recess trim are available for use on Patriot Fully Framed Lockers. See Penco price book for details.

Locker Accessories (Not for TA-50 or Stadium)

| DESCRIPTION | PART # | SIZE | DESCRIPTION | PART # | SIZE |
|--|------------|-----------------|---|-------------|---------|
| Center Partition | 6FCP1844-K | 18 X 44 | Coat Rod Full Length | 6FCR18-K | 18 |
| | 6FCP1844-W | 18 X 44 | | 6FCR18-W | 18 |
| | 6FCP1857-K | 18 X 57 | | 6FCR24-K | 24 |
| | 6FCP1857-W | 18 X 57 | | 6FCR24-W | 24 |
| | 6FCP1851-K | 18 X 51 | | 6FCR30-K | 30 |
| | 6FCP1851-W | 18 X 51 | | 6FCR30-W | 30 |
| | 6FCP2451-K | 24 X 51 | | 6FCR36-K | 36 |
| | 6FCP2451-W | 24 X 51 | | 6FCR36-W | 36 |
| | 6FCP2444-K | 21 X 44 | | 6FCR42-K | 42 |
| | 6FCP2444-W | 21 X 44 | | 6FCR42-W | 42 |
| | 6FCP2457-K | 21 X 57 | | 6FCR48-K | 48 |
| | 6FCP2457-W | 21 X 57 | | 6FCR48-W | 48 |
| Side Shelf (Used with center partitions) | CPHS0918-K | 9 X 18 | Coat Rod Half Length (9" wide, for use with 18" wide locker) | 6FCRH09-18K | 9 |
| | CPHS0918-W | 9 X 18 | | 6FCRH09-18W | 9 |
| | CPHS0924-K | 9 X 24 | | 6FCRH12-24K | 12 |
| | CPHS0924-W | 9 X 24 | | 6FCRH12-24W | 12 |
| | CPHS1218-K | 12 X 18 | | 6FCRH15-30K | 15 |
| | CPHS1218-W | 12 X 18 | | 6FCRH15-30W | 15 |
| | CPHS1224-K | 12 X 24 | | 6FCRH18-36K | 18 |
| | CPHS1224-W | 12 X 24 | | 6FCRH18-36W | 18 |
| | CPHS1524-K | 15 X 24 | | 6FCRH21-42K | 21 |
| | CPHS1524-W | 15 X 24 | | 6FCRH21-42W | 21 |
| | CPHS1824-K | 18 X 24 | | 6FCRH24-48K | 24 |
| | CPHS1824-W | 18 X 24 | | 6FCRH24-48W | 24 |
| | CPHS2124-K | 21 X 24 | Hardwood Bench Seat | BENCH1818K | 18 X 18 |
| | CPHS2124-W | 21 X 24 | | BENCH1818W | 18 X 18 |
| | CPHS2418-K | 24 X 18 | | BENCH1824K | 18 X 24 |
| | CPHS2418-W | 24 X 18 | | BENCH1824W | 18 X 24 |
| | CPHS2424-K | 24 X 24 | | BENCH2418K | 24 X 18 |
| | CPHS2424-W | 24 X 24 | | BENCH2418W | 24 X 18 |
| Individual Hardwood Seat for Duty Locker only | 6RQ1242-K | 18 X 9.5 X 1.25 | | BENCH2424K | 24 X 24 |
| | 6RQ1242-W | 18 X 9.5 X 1.25 | | BENCH2424W | 24 X 24 |
| | 6RQ057-K | 24 X 9.5 X 1.25 | | BENCH3024K | 30 X 24 |
| | 6RQ0575-W | 24 X 9.5 X 1.25 | | BENCH3024W | 30 X 24 |
| | 6RQ11224-K | 18 X 12 X 1.25 | | BENCH362K | 36 X 24 |
| | 6RQ11224-W | 18 X 12 X 1.25 | | BENCH362W | 36 X 24 |
| | 6RQQ722-K | 24 X 12 X 1.25 | | BENCH4224K | 42 X 24 |
| | 6RQQ722-W | 24 X 12 X 1.25 | | BENCH4224W | 42 X 24 |
| | | | | BENCH4824K | 48 X 24 |
| | | | | BENCH4824W | 48 X 24 |

Locker Accessories (Not for TA-50 or Stadium)

| DESCRIPTION | PART # | SIZE | DESCRIPTION | PART # | SIZE |
|--|-------------|--------------|----------------------------------|------------|--------------|
| Drawer - 12" High (bottom of locker only) | DU181812-K | 18 X 18 X 12 | Intermediate Drawer - 6" High | DU181806-K | 18 X 18 X 6 |
| | DU181812-W | 18 X 18 X 12 | | DU181806-W | 18 X 18 X 6 |
| | DU182412-K | 18 X 24 X 12 | | DU182406-K | 18 X 24 X 6 |
| | DU182412-W | 18 X 24 X 12 | | DU182406-W | 18 X 24 X 6 |
| | DU241812-K | 24 X 18 X 12 | | DU241806-K | 24 X 18 X 6 |
| | DU241812-W | 24 X 18 X 12 | | DU241806-W | 24 X 18 X 6 |
| | DU242412-K | 24 X 24 X 12 | | DU242406-K | 24 X 24 X 6 |
| | DU242412-W | 24 X 24 X 12 | | DU242406-W | 24 X 24 X 6 |
| | DU302412-K | 30 X 24 X 12 | | DU301806-K | 30 X 18 X 6 |
| | DU302412-W | 30 X 24 X 12 | | DU301806-W | 30 X 18 X 6 |
| Drawer - 12" High (bottom of locker only) actually 18" wide, goes into a 36" w locker | DU362412-K | 36 X 24 X 12 | | DU302406-K | 30 X 24 X 6 |
| | DU362412-W | 36 X 24 X 12 | | DU302406-W | 30 X 24 X 6 |
| Drawer - 12" High (bottom of locker only) actually 21" wide goes into a 42" w locker | DU422412-K | 42 X 24 X 12 | | DU362406-K | 36 X 24 X 6 |
| | DU422412-W | 42 X 24 X 12 | | DU362406-W | 36 X 24 X 6 |
| Drawer - 12" High (bottom of locker only) actually 24" wide goes into a 48" w locker | DU482412-K | 48 X 24 X 12 | | DU422406-K | 42 X 24 X 6 |
| | DU482412-W | 48 X 24 X 12 | | DU422406-W | 42 X 24 X 6 |
| Inner compartment door (in half shelf only) | 6FCMPT09-K | 9 | Footlocker | DU482406-K | 48 X 24 X 6 |
| | 6FCMPT09-W | 9 | | DU482406-W | 48 X 24 X 6 |
| | 6FCMPT12-K | 12 | | FT181812-K | 18 x 18 x 12 |
| | 6FCMPT12-W | 12 | | FT181812-W | 18 x 18 x 12 |
| | 6FCMPT15-K | 15 | | FT182412-K | 18 x 24 x 12 |
| | 6FCMPT15-W | 15 | | FT182412-W | 18 x 24 x 12 |
| | 6FCMPT18-K | 18 | | FT241812-K | 24 x 18 x 12 |
| | 6FCMPT18-W | 18 | | FT241812-W | 24 x 18 x 12 |
| | 6FCMPT21-K | 21 | | FT242412-K | 24 x 24 x 12 |
| | 6FCMPT21-W | 21 | | FT242412-W | 24 x 24 x 12 |
| | 6FCMPT24-K | 24 | | FT302412-K | 30 x 24 x 12 |
| | 6FCMPT24-W | 24 | | FT302412-W | 30 x 24 x 12 |
| Inner Compartment Panels | STLCMPT18-K | 18 | | FT362412-K | 36 x 24 x 12 |
| | STLCMPT18-W | 18 | | FT362412-W | 36 x 24 x 12 |
| | STLCMPT24-K | 24 | | FT422412-K | 42 x 24 x 12 |
| | STLCMPT24-W | 24 | | FT422412-W | 42 x 24 x 12 |
| | | | | FT482412-K | 48 x 24 x 12 |
| | | | | FT482412-W | 48 x 24 x 12 |

Locker Accessories (Not for TA-50* or Stadium*)

| DESCRIPTION | PART # | SIZE | DESCRIPTION | PART # | SIZE |
|-------------|-------------|---------|---|-------------|---------|
| Half Shelf | 6FHS0918-K | 9 X 18 | Security Box (for top of shelf only) | SBX121812-K | 12 X 18 |
| | 6FHS0918-W | 9 X 18 | | SBX121812-W | 12 X 18 |
| | 6FHS0924-K | 9 X 24 | | SBX122412-K | 12 X 24 |
| | 6FHS0924-W | 9 X 24 | | SBX121812+W | 12 X 24 |
| | 6FHS1218-K | 12 X 18 | | SBX181812-K | 18 X 18 |
| | 6FHS1218-W | 12 X 18 | | SBX181812-W | 18 X 18 |
| | 6FHS1224-K | 12 X 24 | | SBX182412-K | 18 X 24 |
| | 6FHS1224-W | 12 X 24 | | SBX182412-W | 18 X 24 |
| | 6FHS1518-K | 15 X 18 | | SBX241812-K | 24 X 18 |
| | 6FHS1518-W | 15 X 18 | | SBX241812-W | 24 X 18 |
| | 6FHS1524-K | 15 X 24 | | SBX242412-K | 24 X 24 |
| | 6FHS1524-W | 15 X 24 | | SBX242412-W | 24 X 24 |
| | 6FHS1818-K | 18 X 18 | Full Width Security Box | SBX181812-K | 18 X 18 |
| | 6FHS1818-W | 18 X 18 | | SBX181812-W | 18 X 18 |
| | 6FHS1824-K | 18 X 24 | | SBX182412-K | 18 X 24 |
| | 6FHS1824-W | 18 X 24 | | SBX182412-W | 18 X 24 |
| | 6FHS2118-K | 21 X 18 | | SBX241812-K | 24 X 18 |
| | 6FHS2118-W | 21 X 18 | | SBX241812-W | 24 X 18 |
| | 6FHS2124-K | 21 X 24 | | SBX242412-K | 24 X 24 |
| | 6FHS2124-W | 21 X 24 | | SBX242412-W | 24 X 24 |
| | 6FHS2418-K | 24 X 18 | | | |
| | 6FHS2418-W | 24 X 18 | | | |
| | 6FHS2424-K | 24 X 24 | | | |
| | 6FHS2424-W | 24 X 24 | | | |
| Metal Seat | FSEAT1818-K | 18 X 18 | | | |
| | FSEAT1818-W | 18 X 18 | | | |
| | FSEAT1824-K | 18 X 24 | | | |
| | FSEAT1824-W | 18 X 24 | | | |
| | FSEAT2418-K | 24 X 18 | | | |
| | FSEAT2418-W | 24 X 18 | | | |
| | FSEAT2424-K | 24 X 24 | | | |
| | FSEAT2424-W | 24 X 24 | | | |
| | FSEAT3024-K | 30 X 24 | | | |
| | FSEAT3024-W | 30 X 24 | | | |
| | FSEAT3624-K | 36 X 24 | | | |
| | FSEAT3624-W | 36 X 24 | | | |
| | FSEAT4224-K | 42 X 24 | | | |
| | FSEAT4224-W | 42 X 24 | | | |
| | FSEAT4824-K | 48 X 24 | | | |
| | FSEAT4824-W | 48 X 24 | | | |

*Exception: The 4 or 6-inch high Channel Base is still an option for both TA-50 and Stadium

Locker Accessories (Not for TA-50* or Stadium*)

| DESCRIPTION | PART # | SIZE | DESCRIPTION | PART # | SIZE |
|---|------------|---------|----------------------------|------------|-------------|
| Back Rails - For full width shelves when extra support is needed | FF101018BK | 18" | Channel Base - 4 inch high | CBW1818-4K | 18 X 18 X 4 |
| | FF101018BW | 18" | | CBW1824-4K | 18 X 24 X 4 |
| | FF101024BK | 24" | | CBW2421-4K | 24 X 21 X 4 |
| | FF101024BW | 24" | | CBW2424-4K | 24 X 24 X 4 |
| | FF101030K | 30" | | CBW3024-4K | 30 X 24 X 4 |
| | FF101030W | 30" | | CBW3624-4K | 36 X 24 X 4 |
| | FF101036K | 36" | | CBW4224-4K | 42 X 24 X 4 |
| | FF101036W | 36" | | CBW4824-4K | 48 X 24 X 4 |
| | FF101042K | 42" | | CBW3024-4K | 30 X 24 X 4 |
| | FF101042W | 42" | Channel Base - 6 inch high | CBW1818-6K | 18 X 18 X 6 |
| | FF101048K | 48" | | CBW1824-6K | 18 X 24 X 6 |
| | FF101048W | 48" | | CBW2418-6K | 24 X 18 X 6 |
| Full Width Shelf Comes with 2 Back Hooks | 6FSH1818-K | 18 X 18 | | CBW2421-6K | 24 X 21 X 6 |
| | 6FSH1818-W | 18 X 18 | | CBW2424-6K | 24 X 24 X 6 |
| | 6FSH1824-K | 18 X 24 | | CBW3024-6K | 30 X 24 X 6 |
| | 6FSH1824-W | 18 X 24 | | CBW3624-6K | 36 X 24 X 6 |
| | 6FSH2418-K | 24 X 18 | | CBW4224-6K | 42 X 24 X 6 |
| | 6FSH2418-W | 24 X 18 | | CBW4824-6K | 48 X 24 X 6 |
| | 6FSH2421-K | 24 X 21 | Side Rails | FF101018SK | 18 |
| | 6FSH2421-W | 24 X 21 | | FF101018SW | 18 |
| | 6FSH2424-K | 24 X 24 | | FF101021SK | 21 |
| | 6FSH2424-W | 24 X 24 | | FF101021SW | 21 |
| | 6FSH3024-K | 30 X 24 | | FF101024SK | 24 |
| | 6FSH3024-W | 30 X 24 | | FF101024SW | 24 |
| | 6FSH3624-K | 36 X 24 | | | |
| | 6FSH3624-W | 36 X 24 | | | |
| | 6FSH4224-K | 42 X 24 | | | |
| | 6FSH4224-W | 42 X 24 | | | |
| | 6FSH4824-K | 48 X 24 | | | |
| | 6FSH4824-W | 48 X 24 | | | |
| Hooks | 8696 | | | | |
| Cell Phone / Key Tray - Attaches to center partition or half shelf but if not ordering either, you can attach it to the side of the locker by ordering 2 side rails. | 60830H | 8 x 2 | | | |

Locker Accessories (Not for TA-50* or Stadium*)

| DESCRIPTION | PART # | SIZE | DESCRIPTION | PART # | SIZE |
|---|-------------|---------------|--------------------------------|------------|--------|
| Garment Separator - Full Width - Replaces Coat Rod | 6FGARM-18HK | 18 x 2 | Garment Separator - Half Width | HGARM-09HK | 9 X 2 |
| | 6FGARM-18HW | 18 x 2 | | HGARM-09HW | 9 X 2 |
| | 6FGARM-24HK | 24 x 2 | | HGARM-12HK | 12 X 2 |
| | 6FGARM-24HW | 24 x 2 | | HGARM-12HW | 12 X 2 |
| | 6FGARM-30HK | 30 x 2 | | HGARM-15HK | 15 X 2 |
| | 6FGARM-30HW | 30 x 2 | | HGARM-15HW | 15 X 2 |
| | 6FGARM-36HK | 36 x 2 | | HGARM-18HK | 18 X 2 |
| | 6FGARM-36HW | 36 x 2 | | HGARM-18HW | 18 X 2 |
| | 6FGARM-42HK | 42 x 2 | | HGARM-21HK | 21 X 2 |
| | 6FGARM-42HW | 42 x 2 | | HGARM-21HW | 21 X 2 |
| | 6FGARM-48HK | 48 x 2 | | HGARM-24HK | 24 X 2 |
| | 6FGARM-48HW | 48 x 2 | | HGARM-24HW | 24 X 2 |
| Acrylic Mirror- adhesive back: 1/8" thick; cannot be attached to doors with diamond or visual perforations, mini-louvers & sound-deadening panels | 96370 | 6 X 8 | Leveling Feet Kit | HM0035A | |
| Name Card Holder Size shown is card size. | 9446H | 2-3/4 X 1-1/4 | | | |
| Boot Tray Rests on bottom of locker. Fits 24" or wider lockers | 6ACXFF09H | 14 X 12 | | | |
| Document Sleeve Large (mounts to half shelf or center partition) | 6ACXFF54C | 12 X 3 X 8 | | | |
| Document Sleeve Small (mounts to half shelf or center partition) | 6ACXAB32C | 9.5 X 3 X 8 | | | |
| Parachute / Body Armor Rack Formed from 3/4-inch diameter, heavy wall steel tube. Reinforced by 14-gauge gussets. Mounted securely to rear of locker. 180-pound capacity. Rack is attach by drilling holes in the locker back and using the nuts, bolts and washers supplied. If ordering welded this will be done at factory, if ordering knockdown must be done on site. | 6ACXAB33C-K | 18 | | | |
| | 6ACXAB33C-W | 18 | | | |



**Exception: The 4 or 6-inch high Channel Base is still an option for both TA-50 and Stadium*

Locking Options

All Patriot Lockers can be outfitted with a number of locking options. While all models are designed to use readily available locker locks, some options requires specific lock types.

A - Gear and Turnout Security Boxes are hinged on the right and can be equipped with any box locker lock including padlocks.

B - The standard Ultra Cremone Recessed Handle on Gear lockers can accept a padlock or built-in lock.

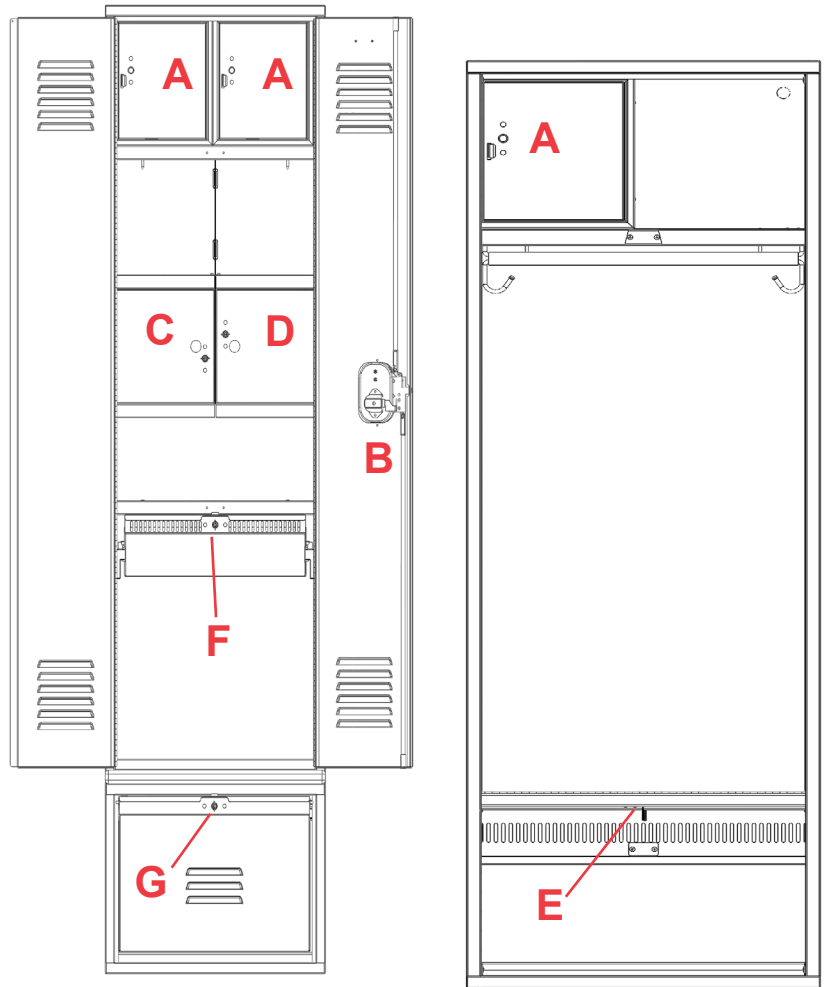
C - Left Hand Inner Compartment Door accepts most built-in dead bolt locks. It does not have a padlock attachment.

D - Right Hand Inner Compartment Door accepts most built-in dead bolt locks. It does not have a padlock attachment.

E - Gear and Turnout Footlockers have a padlock attachment and no provision for built-in locks.

F - Intermediate Drawer for Gear and Turnout are configured to work best with a built-in spring bolt key for ease of use.

G - Bottom Drawers are configured to work best with a built-in spring bolt key for ease of use.



| | Padlock | Keyed Spring Bolt | Keyed Dead Bolt | Combination Spring Bolt | Combination Dead Bolt |
|---|-----------|--|-----------------|-------------------------|-----------------------|
| A | PREFERRED | OK | OK | OK | OK |
| B | OK | REFER TO LOCK APPLICATION TABLE IN LOCKER PRICE BOOK | | | |
| C | NO | PREFERRED (LH) | OK (LH) | OK (LH) | OK (LH) |
| D | NO | PREFERRED (RH) | OK (RH) | OK (RH) | OK (RH) |
| E | ONLY | NO | NO | NO | NO |
| F | NO | PREFERRED | OK | NO | NO |
| G | NO | PREFERRED | OK | NO | NO |

Fully Framed TA-50 Locker Knocked Down Specifications

These are snapshot specifications for quick reference and product selection. Full Specifications with expanded product information can be found on pencoproducts.com and may include updates as a result of Penco's continuous product improvement initiatives.

At a Glance...

- Heavy-duty TA-50 locker
- Knocked-down construction
- 14-gauge Door, 16-gauge Top and Bottom
- 16-gauge Diamond or Solid Sides optional
- Flattened Expanded Metal Sides standard
- Ultra Cremone Recessed Handle standard
- 4 or 6-inch high Channel Base available



SNAPSHOT SPECIFICATIONS - Section 10 51 13

1.01 SECTION INCLUDES

Heavy Duty Knocked Down TA-50 Lockers

1.02 REFERENCES

ADAAG - Americans with Disabilities Act, Accessibility Guidelines.

1.03 SUBMITTALS

Submit under provisions of Section 01 33 00. Shop Drawings: Show the following: Dimensioned drawings including plans, elevations, and sections to show locker locations and interfaces with adjacent substrates. Details of assembly, erection, anchorage and clearance requirements. Selection Samples: For each finish product specified, two complete sets of color chips representing manufacturer's full range of available colors and finishes.

1.04 DELIVERY, STORAGE AND HANDLING

Store products in manufacturer's unopened packaging until ready for installation to protect the locker finish and adjacent surfaces from damage.

PART 2 - PRODUCTS

2.01 MANUFACTURER

Acceptable Manufacturer: Penco Products, Inc., which is located at: 1820 Stonehenge Drive, Greenville, NC 27858; Tel: 800-562-1000; Fax: 800-248-1555; Email: general@pencoproducts.com; Web: www.pencoproducts.com

Lockers shall be GREENGUARD Gold Certified by UL Environment through the GREENGUARD Certification

Program.

2.02 MATERIALS

Steel: Prime grade mild cold-rolled sheet steel free from surface imperfection, capable of taking a high-grade enamel finish and in compliance with ASTM A1008. Sheet steel components shall be fabricated using zinc-coated steel free from surface imperfection, capable of taking a high-grade enamel finish and in compliance with ASTM A653. Flattened Expanded Metal Divisions that meets or exceeds ASTM A1008/A1008M, captured on all sides by the tubular shaped frame assembly. Self-Tapping Screws and Rivets. Provide only metal lockers that conform to Made in US regulations.

2.03 HEAVY DUTY PERSONAL TA-50 LOCKERS

Heavy Duty Lockers: All locker body components made of cold rolled steel specially formed for added strength and rigidity and to ensure tight joints at fastening points.

Locker Body Construction: Bottoms, Tops, and Shelves: 16-gauge steel. Sides: 16-gauge solid sides, Flattened expanded metal. Backs: Solid 18-gauge steel. One-piece. Doors: 14-gauge steel. Standard Ventilation: 6-inch (152.4 mm) wide by 3/4" high (19.05 mm) high horizontal louvers arranged two groups of 6. Optional Ventilation: 3/4 inch (19 mm) wide by 1-1/2 inch (38 mm) high diamond-shaped perforations. Optional Ventilation: Solid. Tops and bottoms with four sides formed at 90 degrees welded to the fully-framed channel with cast corner pieces.

Channel Base: 4-inch or 6-inch high. 14-gauge sheet forming a "C" channel attached to locker bottom. Shelves with four sides formed to 90 degrees, front and back edge having a second bend. Locker Body Construction: Tubular frame construction with cast steel interlocks provide a true fully framed locker body construction. Hole spacing in locker body construction: Not exceeding 3-inches. For factory assembly order Welded version.

Doors: One piece sheet steel with holes for attaching number plates.

Hinges: Continuous type: 16 gauge piano hinge measuring full height of door. Welded to door and attached to locker frame using steel rivets.

2.04 DOOR HANDLES AND LATCHING

Single Tier Lockers: Ultra Cremone Recessed Handle engages the door frame on three sides. The top and bottom frames are engaged with 0.375 inch (9.5 mm) steel rods, and a 0.25 x 0.36-inch-thick center latch engages at the side or left door. Locate handle in the formed stainless steel pocket. Double door configurations shall consist of a left hinged door secured its full length by the right hinged door when latched. Handle assembly shall be secured to the pocket using a guided channel. Pocket is secured to the door in two places. All door configurations delivered knocked down will have doors shipped separately for attachment on site using supplied hardware. Door shall be reinforced using a 20-gauge vertical pan spot

Fully Framed TA-50 Locker Knocked Down (continued)

SNAPSHOT SPECIFICATIONS (continued)

welded a maximum of 8" on center to the hinge and latch side channels, and spot welded a maximum of 8" on center to the door skin along the upper and lower pan edge for optimum strength, quiet operation and stiffness. Firmly secure rubber silencers to locker frame.

ADA Compliant: Ultra Cremone Recessed Handle mechanism should be ADA complaint requiring no twisting, pinching or tight grasping and is operable using less than 5lbs of force.

2.05 INTERIOR EQUIPMENT

Heavy Duty TA-50 Lockers with Doors: Single Tier 78 inches (1981 mm): Shelf located approximately 13 inches (330 mm) below top of locker. Two heavy-duty single prong hooks with diameter of 0.276 inches mounted to shelf and will accept a coat rod. Two single prong hooks with a diameter of 0.187 inches in rear mounted to shelf.

2.06 ACCESSORIES

(See full product specifications.)

2.07 FABRICATION

Fabricate lockers with fully framed construction, 8 male/female tubular insertion points to provide the fully framed locker body, square, rigid, without warp, with metal faces flat and free of distortion. Fabricate lockers on the unit principle, each locker with individual door and frame, individual top, bottom, back, and shelves. Verify dimensions and arrangement before fabrication.

Finish: Enamel powder coat paint finish electrostatically applied and properly cured to manufacturer's specifications for optimum performance. Finishes containing volatile organic compounds and subject to out-gassing are not acceptable. Locker exterior and interior shall be painted the same color. Powder Coat - Dry Thickness: 1 to 1.2 mils (0.025 to 0.03 mm). Powder Coat Plus - Dry Thickness: 2 to 2.2 mils (0.05 to 0.055 mm). Color: As selected from manufacturer's standard colors.

Special Finishes: Custom color match, Anti-Graffiti, Anti-Microbial, and high performance finishes are available.

PART 3 - EXECUTION

3.01 EXAMINATION

Do not begin installation until substrates and bases have been properly prepared. If substrate and bases are the responsibility of another installer, notify Architect of unsatisfactory preparation before proceeding.

3.02 INSTALLATION

Install metal lockers and accessories at locations shown in accordance with manufacturer's instructions. Install lockers plumb, level, and square. Work is not to progress until site meets necessary conditions. Anchor lockers to floor and/or wall as recommended by the manufacturer. Bolt adjoining locker units together to provide rigid installation. Install sloping tops and metal fillers using concealed

fasteners. Provide flush hairline joints against adjacent surfaces. Install benches by fastening bench tops to pedestals and securely anchoring to the floor using appropriate anchors for the floor material.

3.03 ADJUSTING

Adjust doors and latches to operate without binding. Verify that latches are operating satisfactorily. Adjust built-in locks to prevent binding of dial or key and ensure smooth operation prior to substantial completion.

Touch-up with factory-supplied paint and repair or replace damaged products before substantial completion.

3.04 PROTECTION

Protect installed products until completion of project.

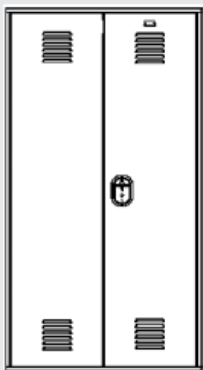
Get the Full Specifications Here

Log On:

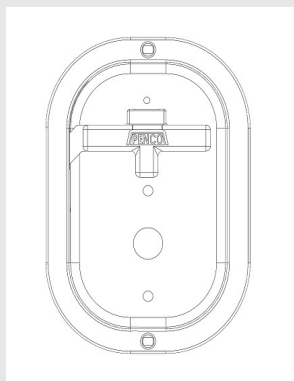


Visit:

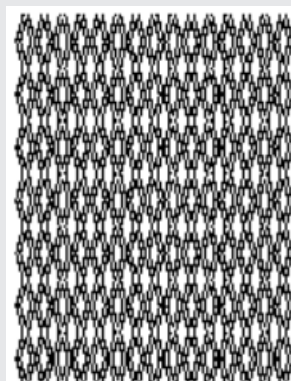
pencoproducts.com/tools-resources-downloads/spec-sheets/



Front Elevation



Ultra Cremone Recessed Handle

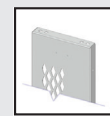


Flattened Expanded Metal

Ventilation Options



Standard Louvers (S)



Diamond Shaped (O)



Solid Door (O)

Fully Framed TA-50 Locker Welded

These are snapshot specifications for quick reference and product selection. Full Specifications with expanded product information can be found on pencoproducts.com and may include updates as a result of Penco's continuous product improvement initiatives.

At a Glance...

- Heavy-duty TA-50 locker
- Welded construction
- 14-gauge Door, 16-gauge Top and Bottom
- 16-gauge Diamond or Solid Sides optional
- Flattened Expanded Metal Sides standard
- Ultra Cremone Recessed Handle standard
- 4 or 6-inch high Channel Base available



SNAPSHOT SPECIFICATIONS - Section 10 51 13

PART 1 - GENERAL

1.01 SECTION INCLUDES

Heavy Duty Welded TA-50 Lockers

1.02 REFERENCES

ADAAG - Americans with Disabilities Act, Accessibility Guidelines.

1.03 SUBMITTALS

Submit under provisions of Section 01 33 00. Shop Drawings shall show dimensioned plans, elevations, and sections.

1.04 DELIVERY, STORAGE AND HANDLING

Store products in manufacturer's unopened packaging until ready for installation to protect the locker finish and adjacent surfaces from damage.

PART 2 - PRODUCTS

2.01 MANUFACTURER

Acceptable Manufacturer: Penco Products, Inc., which is located at: 1820 Stonehenge Drive, Greenville, NC 27858; Tel: 800-562-1000; Fax: 800-248-1555; Email: general@pencoproducts.com; Web: www.pencoproducts.com

Lockers shall be GREENGUARD Gold Certified by UL Environment through the GREENGUARD Certification Program.

2.02 MATERIALS

Steel: Prime grade mild cold-rolled sheet steel free from surface imperfection, capable of taking a high-grade enamel finish and in compliance with ASTM A1008. Sheet steel components shall be fabricated

using zinc-coated steel free from surface imperfection, capable of taking a high-grade enamel finish and in compliance with ASTM A653. Flattened Expanded Metal Divisions that meets or exceeds ASTM A1008/A1008M, captured on all sides by the tubular shaped frame assembly. Self-Tapping Screws and Rivets. Provide only metal lockers that conform to Made in US regulations.

2.03 HEAVY DUTY PERSONAL TA-50 LOCKERS

Heavy Duty Lockers: All locker body components made of cold rolled steel specially formed for added strength and rigidity and to ensure tight joints at fastening points.

Locker Body Construction: Bottoms, Tops, and Shelves: 16-gauge steel. Sides: 16-gauge solid sides, Flattened Expanded Metal. Backs: Solid 18-gauge steel. One-piece. Doors: 14-gauge steel. Standard Ventilation: 6-inch (152.4 mm) wide by ¾" high (19.05 mm) high horizontal louvers arranged two groups of 6. Optional Ventilation: ¾ inch (19 mm) wide by 1-1/2 inch (38 mm) high diamond-shaped perforations. Optional Ventilation: Solid tops and bottoms with four sides formed at 90 degrees welded to the fully-framed channel with cast corner pieces. Channel Base: 4-inch or 6-inch high. 14-gauge sheet forming a "C" channel attached to locker bottom. Shelves with four sides formed to 90 degrees, front and back edge having a second bend. Locker Body Construction: Tubular frame construction with cast steel interlocks provide a true fully framed locker body construction. Hole

spacing in locker body construction: Not exceeding 3 inches. For factory assembly order Welded version.

Locker Doors: One-piece sheet steel. Provide holes for attaching number plates.

Hinges: Continuous type: 16 gauge piano hinge measuring full height of door. Welded to door and attached to locker frame using steel rivets.

2.04 DOOR HANDLES AND LATCHING

Single Tier Lockers: Ultra Cremone Recessed Handle: Handle shall engages the door frame on three sides. The top and bottom frames are engaged with 0.375 inch (9.5 mm) steel rods, and a 0.25 x 0.36-inch-thick center latch engages at the side or left door. Locate handle in the formed stainless steel pocket. Double door configurations shall consist of a left hinged door secured its full length by the right hinged door when latched. Handle assembly shall be secured to the pocket using a guided channel. Pocket is secured to the door in two places. All door configurations delivered knocked down will have doors shipped separately for attachment on site using supplied hardware. Door shall be reinforced using a 20-gauge vertical pan spot welded a maximum of 8" on center to the hinge and latch side channels, and spot welded a maximum of 8" on center to the door skin along the upper and lower pan edge for optimum strength, quiet operation and stiffness. Firmly secure rubber silencers to locker frame.

Patriot Fully Framed TA-50 Locker Welded (continued)

SNAPSHOT SPECIFICATIONS (continued)

ADA Compliant: Ultra Cremone Recessed Handle mechanism should be ADA complaint requiring no twisting, pinching or tight grasping and is operable using less than 5lbs of force.

2.05 INTERIOR EQUIPMENT

A Heavy Duty TA-50 Lockers with Doors: Single-Tier, 78-inches (1981 mm): Shelf located approximately 13-inches (330 mm) below top of locker. Coat Rod – using two heavy-duty single prong hooks, mounted to shelf and two single prong hooks with a diameter of 0.187 in rear, mounted to shelf.

2.06 ACCESSORIES

(See full product specifications.)

2.07 FABRICATION

Fabricate lockers with fully framed construction, 8 male/female tubular insertion points to provide the fully framed locker body, square, rigid, without warp, with metal faces flat and free of distortion. Fabricate lockers on the unit principle, each locker with individual door and frame, individual top, bottom, back, and shelves. Verify dimensions and arrangement before fabrication.

Finish: Enamel powder coat paint finish electrostatically applied and properly cured to manufacturer's specifications for optimum performance. Finishes containingb volatile organic compounds and subject to out-gassing are not acceptable. Locker exterior and interior shall be painted the same color. Powder Coat - Dry Thickness: 1 to 1.2 mils (0.025 to 0.03 mm).

Powder Coat Plus - Dry Thickness: 2 to 2.2 mils (0.05 to 0.055 mm). Color: As selected from manufacturer's standard colors.

Special Finishes: Custom color match, Anti-Graffiti, Anti-Microbial, and high performance finishes are available.

PART 3 - EXECUTION

3.01 EXAMINATION

Do not begin installation until substrates and bases have been properly prepared. If substrate and bases are the responsibility of another installer, notify Architect of unsatisfactory preparation before proceeding.

3.02 INSTALLATION

Install metal lockers and accessories at locations shown in accordance with manufacturer's instructions. Install lockers plumb, level, and square. Work is not to progress until site meets necessary conditions. Anchor lockers to floor and/or wall as recommended by the manufacturer. Bolt adjoining locker units together to provide rigid installation. Install sloping tops and metal fillers using concealed fasteners. Provide flush hairline joints against adjacent surfaces. Install benches by fastening bench tops to pedestals and securely anchoring to the floor using appropriate anchors for the floor material.

3.03 ADJUSTING

Adjust doors and latches to operate without binding. Verify that latches are operating satisfactorily. Adjust

built-in locks to prevent binding of dial or key and ensure smooth operation prior to substantial completion.

Touch-up with factory-supplied paint and repair or replace damaged products before substantial completion.

3.04 PROTECTION

Protect installed products until completion of project.

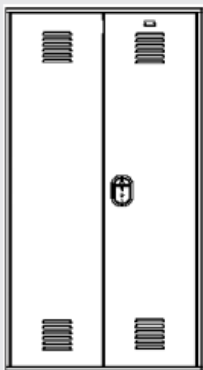
Get the Full Specifications Here

Log On:

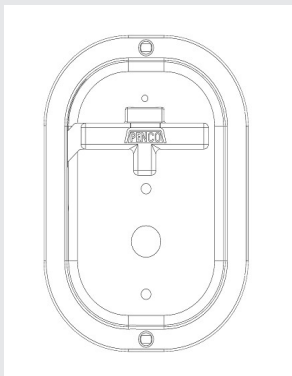


Visit:

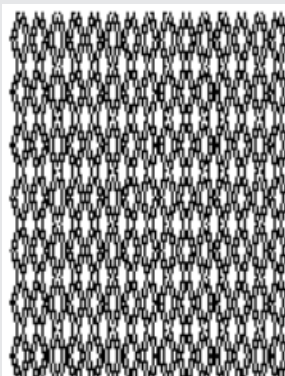
pencoproducts.com/tools-resources-downloads/spec-sheets/



Front Elevation



Ultra Cremone Recessed Handle



Flattened Expanded Metal

Ventilation Options



Standard Louvers (S)



Diamond Shaped (O)



Solid Door (O)

Fully Framed Gear Locker Knocked Down

These are snapshot specifications for quick reference and product selection. Full Specifications with expanded product information can be found on pencoproducts.com and may include updates as a result of Penco's continuous product improvement initiatives.

At a Glance...

- Heavy-duty Gear locker
- Knocked Down construction
- 14-gauge Door, 16-gauge Top and Bottom
- 16-gauge Diamond or Solid Sides optional
- Flattened Expanded Metal Sides standard
- Wide variety of interior accessories
- Ultra Cremone Recessed Handle standard
- 4 or 6-inch high Channel Base available



SNAPSHOT SPECIFICATIONS - Section 10 51 13

PART 1 - GENERAL

1.01 SECTION INCLUDES

Heavy Duty Knocked Down Fully Framed Gear Lockers

1.02 REFERENCES

ADAAG - Americans with Disabilities Act, Accessibility Guidelines.

1.03 SUBMITTALS

Submit under provisions of Section 01 33 00. Shop Drawings: Show the following: Dimensioned drawings including plans, elevations, and sections to show locker locations and interfaces with adjacent substrates. Details of assembly, erection, anchorage and clearance requirements. Selection Samples: For each finish product specified, two complete sets of color chips representing manufacturer's full range of available colors and finishes.

1.04 DELIVERY, STORAGE AND HANDLING

Store products in manufacturer's unopened packaging until ready for installation to protect the locker finish and adjacent surfaces from damage.

PART 2 - PRODUCTS

2.01 MANUFACTURER

Acceptable Manufacturer: Penco Products, Inc., which is located at: 1820 Stonehenge Drive, Greenville, NC 27858; Tel: 800-562-1000; Fax: 800-248-1555; Email: general@pencoproducts.com; Web: www.pencoproducts.com

Lockers shall be GREENGUARD Gold Certified by UL Environment through

the GREENGUARD Certification Program.

2.02 MATERIALS

Steel: All Penco standard lockers are constructed using prime grade steel free from surface imperfection capable of taking high grade enamel finish. Sheet steel components shall be zinc coated and free from surface imperfection and capable of taking high grade enamel finish. Flattened expanded metal divisions meet or exceed ASTM M1008/A1008M captured on all sides by the tubular shaped frame assembly. Self-tapping screws and rivets. Provide only metal lockers that conform to Made in US regulations.

2.03 HEAVY DUTY LOCKERS

Heavy Duty Lockers: All locker body components made of cold rolled steel specially formed for added strength and rigidity and to ensure tight joints at fastening points.

Locker Body Construction: Bottoms, Tops, and Shelves: 16-gauge steel. Sides: 16-gauge Solid Sides, Flattened expanded metal, 16-gauge Diamond Perforation on 72-inch high only. Backs: Solid 18-gauge steel. One-piece. Doors: 14-gauge steel. Standard Ventilation: 6-inch (152.4 mm) wide by ¾" high (19.05 mm) high horizontal louvers arranged two groups of 6. Optional Ventilation: 3/4 inch (19 mm) wide by 1-1/2 inch (38 mm high diamond-shaped perforations. Optional Ventilation: Solid Tops and bottoms with four sides formed at 90 degrees welded to the fully-framed channel with cast corner pieces. Channel Base: 4-inch or 6-inch high. 14-gauge sheet

forming a "C" channel attached to locker bottom. Shelves with four sides formed to 90 degrees, front and back edge having a second bend.

Tubular frame construction with cast steel interlocks provide a true fully framed locker body construction. Hole spacing in locker body construction: Not exceeding 3 inches.

Locker Doors: One-piece sheet steel. Provide holes for attaching number plates.

Hinges: Continuous type: 16-gauge piano hinge measuring full height of door. Welded to door and attached to locker frame using steel rivets.

2.04 DOOR HANDLES AND LATCHING

Single Tier Lockers: Ultra Cremone Recessed Handle: Handle shall engage the door frame on three sides. The top and bottom frames are engaged with 3/8 inch (9.5 mm) steel rods, and a ¼ x 3-inch-thick center latch engages at the side or left door. Locate handle in the formed stainless steel pocket. Double door configurations shall consist of a left hinged door secured its full length by the right hinged door when latched. Handle assembly shall be secured to the pocket using a guided channel. Pocket is secured to the door in two places. Doors 18" wide or wider shall be reinforced using a 20-gauge vertical pan spot welded at a maximum of 8" on center to the hinge side of the door.

Door shall be reinforced using a 20-gauge vertical pan spot welded a maximum of 8" on center to the

Patriot Fully Framed Gear Locker Knocked Down (continued)

SNAPSHOT SPECIFICATIONS (continued)

hinge and latch side channels, and spot welded a maximum of 8" on center to the door skin along the upper and lower pan edge for optimum strength, quiet operation and stiffness. Firmly secure rubber silencers to locker frame.

ADA Compliant: Ultra Cremone Recessed Handle mechanism should be ADA complaint requiring no twisting, pinching or tight grasping and is operable using less than 5lbs of force.

2.05 INTERIOR EQUIPMENT

Heavy Duty Gear Lockers with Doors: Optional Full Width Shelf - located approximately 13-inches (330 mm) below top of locker. Optional Coat Rod - using two heavy duty single prong hooks, mounted to shelf and two single prong hooks with a diameter of 0.187 in rear, mounted to shelf.

2.06 ACCESSORIES

(See full product specifications.)

2.07 FABRICATION

Fabricate lockers with fully framed construction, 8 male/female tubular insertion points to provide the fully framed locker body, square, rigid, without warp, with metal faces flat and free of distortion. Fabricate lockers on the unit principle, each locker with individual door and frame, individual top, bottom, back, and shelves. Verify dimensions and arrangement before fabrication.

Finish: Enamel powder coat paint finish applied in strict adherence to paint manufacturer's specifications to provide optimum appearance and performance. Finishes releasing VOCs are not acceptable. Interior and Exterior shall be painted the same color. Standard coating thickness is 1 to 1.2 mil dry film thickness minimum. Powder Coat Plus option increases thickness to 2 to 2.2 mil minimum. Colors as selected from manufacturer's standard colors. All locker body components shall match color of door and frame.

Special Finishes: Custom color, Anti-Graffiti, and Anti-Microbial finishes are available.

PART 3 - EXECUTION

3.01 EXAMINATION

Do not begin installation until substrates and bases have been properly prepared. If substrate and bases are the responsibility of another installer, notify Architect of unsatisfactory preparation before proceeding.

3.02 INSTALLATION

Install metal lockers and accessories at locations shown in accordance with manufacturer's instructions. Install lockers plumb, level, and square. Work is not to progress until site meets necessary conditions. Anchor lockers to floor and/or wall as recommended by the manufacturer. Bolt adjoining locker units together to provide rigid installation. Install sloping tops and metal fillers using concealed fasteners. Provide flush hairline joints against adjacent surfaces. Install benches by fastening bench tops to pedestals and securely anchoring to the floor using appropriate anchors for the floor material.

3.03 ADJUSTING AND CLEANING

Adjust doors and latches to operate without binding. Verify that latches are operating satisfactorily. Adjust built-in locks to prevent binding of dial or key and ensure smooth operation prior to substantial completion.

Touch-up with factory-supplied paint and repair or replace damaged products before substantial completion.

3.04 PROTECTION

Protect installed products until completion of project.

Get the Full Specifications Here

Log On:



Visit:

pencoproducts.com/tools-resources-downloads/spec-sheets/

Fully Framed Gear Locker Welded

These are snapshot specifications for quick reference and product selection. Full Specifications with expanded product information can be found on pencoproducts.com and may include updates as a result of Penco's continuous product improvement initiatives.

At a Glance...

- Heavy-duty Gear locker
- Welded construction
- 14-gauge Door, 16-gauge Top and Bottom
- 16-gauge Diamond or Solid Sides optional
- Flattened Expanded Metal Sides standard
- Wide variety of interior accessories
- Ultra Cremone Recessed Handle standard
- 4 or 6-inch high Channel Base available



SNAPSHOT SPECIFICATIONS - Section 10 51 13

PART 1 - GENERAL

1.01 SECTION INCLUDES

Heavy Duty Welded Fully Framed Gear Lockers

1.02 REFERENCES

ADAAG - Americans with Disabilities Act, Accessibility Guidelines.

1.03 SUBMITTALS

Submit under provisions of Section 01 33 00. Shop Drawings: Show the following: Dimensioned drawings including plans, elevations, and sections to show locker locations and interfaces with adjacent substrates. Details of assembly, erection, anchorage and clearance requirements. Selection Samples: For each finish product specified, two complete sets of color chips representing manufacturer's full range of available colors and finishes.

1.04 DELIVERY, STORAGE AND HANDLING

Store products in manufacturer's unopened packaging until ready for installation to protect the locker finish and adjacent surfaces from damage.

PART 2 - PRODUCTS

2.01 MANUFACTURER

Acceptable Manufacturer: Penco Products, Inc., which is located at: 1820 Stonehenge Drive, Greenville, NC 27858; Tel: 800-562-1000; Fax: 800-248-1555; Email: general@pencoproducts.com; Web: www.pencoproducts.com

Lockers shall be GREENGUARD Gold Certified by UL Environment through

the GREENGUARD Certification Program.

2.02 MATERIALS

Steel: All Penco standard lockers are constructed using prime grade steel free from surface imperfection capable of taking high grade enamel finish. Sheet steel components shall be zinc coated and free from surface imperfection and capable of taking high grade enamel finish. flattened expanded metal divisions meet or exceed ASTM M1008/A1008M captured on all sides by the tubular shaped frame assembly. Self-tapping screws and rivets. Provide only metal lockers that conform to Made in US regulations.

2.03 HEAVY DUTY LOCKERS

Heavy Duty Lockers: All locker body components made of cold rolled steel specially formed for added strength and rigidity and to ensure tight joints at fastening points.

Locker Body Construction: Bottoms, Tops, and Shelves: 16-gauge steel. Sides: 16-gauge Solid Sides, Flattened expanded metal, 16-gauge Diamond Perforation on 72-inch high only. Backs: Solid 18-gauge steel. One-piece. Doors: 14-gauge steel. Standard Ventilation: 6-inch (152.4 mm) wide by ¾" high (19.05 mm) high horizontal louvers arranged two groups of 6. Optional Ventilation: ¾ inch (19 mm) wide by 1-1/2 inch (38 mm high diamond-shaped perforations. Optional Ventilation: Solid Tops and bottoms with four sides formed at 90 degrees welded to the fully- framed channel with cast corner pieces. Channel Base:

4-inch or 6-inch high. 14-gauge sheet forming a "C" channel attached to locker bottom. Shelves with four sides formed to 90 degrees, front and back edge having a second bend.

Welded shell. Tubular frame construction with cast steel interlocks provide a true fully framed locker body construction. Hole spacing in locker body construction: Not exceeding 3 inches.

Locker Doors: One-piece sheet steel. Provide holes for attaching number plates.

Hinges: Continuous type: 16-gauge piano hinge measuring full height of door. Welded to door and attached to locker frame using steel rivets.

2.04 DOOR HANDLES AND LATCHING

Single Tier Lockers: Ultra Cremone Recessed Handle: Handle shall engage the door frame on three sides. The top and bottom frames are engaged with 3/8 inch (9.5 mm) steel rods, and a ¼ x 3-inch-thick center latch engages at the side or left door. Locate handle in the formed stainless steel pocket. Double door configurations shall consist of a left hinged door secured its full length by the right hinged door when latched. Handle assembly shall be secured to the pocket using a guided channel. Pocket is secured to the door in two places. Doors 18" wide or wider shall be reinforced using a 20-gauge vertical pan spot welded at a maximum of 8" on center to the hinge side of the door.

Fully Framed Gear Locker Welded (continued)

SNAPSHOT SPECIFICATIONS (continued)

Door shall be reinforced using a 20-gauge vertical pan spot welded a maximum of 8" on center to the hinge and latch side channels, and spot welded a maximum of 8" on center to the door skin along the upper and lower pan edge for optimum strength, quiet operation and stiffness. Firmly secure rubber silencers to locker frame.

ADA Compliant: Ultra Cremone Recessed Handle mechanism should be ADA complaint requiring no twisting, pinching or tight grasping and is operable using less than 5lbs of force.

2.05 INTERIOR EQUIPMENT

Heavy Duty Gear Lockers with Doors: Optional Full Width Shelf - located approximately 13-inches (330 mm) below top of locker. Optional Coat Rod - using two heavy duty single prong hooks, mounted to shelf and two single prong hooks with a diameter of 0.187 in rear, mounted to shelf.

2.06 ACCESSORIES

(See full product specifications.)

2.07 FABRICATION

Fabricate lockers with fully framed construction, 8 male/female tubular insertion points to provide the fully framed locker body, square, rigid, without warp, with metal faces flat and free of distortion. Fabricate lockers on the unit principle, each locker with individual door and frame, individual top, bottom, back, and shelves. Verify dimensions and arrangement before fabrication.

Finish: Enamel powder coat paint finish applied in strict adherence to paint manufacturer's specifications to provide optimum appearance and performance. Finishes releasing VOCs are not acceptable. Interior and Exterior shall be painted the same color. Standard coating thickness is 1 to 1.2 mil dry film thickness minimum. Powder Coat Plus option increases thickness to 2 to 2.2 mil minimum. Colors as selected from manufacturer's standard colors. All locker body components shall match color of door and frame.

Special Finishes: Custom color, Anti-Graffiti, and Anti-Microbial finishes are available.

PART 3 - EXECUTION

3.01 EXAMINATION

Do not begin installation until substrates and bases have been properly prepared. If substrate and bases are the responsibility of another installer, notify Architect of unsatisfactory preparation before proceeding.

3.02 INSTALLATION

Install metal lockers and accessories at locations shown in accordance with manufacturer's instructions. Install lockers plumb, level, and square. Work is not to progress until site meets necessary conditions. Anchor lockers to floor and/or wall as recommended by the manufacturer. Bolt adjoining locker units together to provide rigid installation. Install sloping tops and metal fillers using concealed fasteners. Provide flush hairline joints against adjacent surfaces. Install benches by fastening bench tops to pedestals and securely anchoring to the floor using appropriate anchors for the floor material.

3.03 ADJUSTING AND CLEANING

Adjust doors and latches to operate without binding. Verify that latches are operating satisfactorily. Adjust built-in locks to prevent binding of dial or key and ensure smooth operation prior to substantial completion.

Touch-up with factory-supplied paint and repair or replace damaged products before substantial completion.

3.04 PROTECTION

Protect installed products until completion of project.

Get the Full Specifications Here

Log On:



Visit:

pencoproducts.com/tools-resources-downloads/spec-sheets/

Fully Framed Turnout Locker Knocked Down

These are snapshot specifications for quick reference and product selection. Full Specifications with expanded product information can be found on pencoproducts.com and may include updates as a result of Penco's continuous product improvement initiatives.

At a Glance...

- Heavy-duty Turnout locker
- Knocked-down construction
- 16-gauge Top, Bottom, and Shelves
- 16-gauge Diamond or Solid Sides optional
- Flattened Expanded Metal Sides standard
- Wide variety of interior accessories
- 4 or 6-inch high Channel Base available



SNAPSHOT SPECIFICATIONS - Section 10 51 13

PART 1 - GENERAL

1.01 SECTION INCLUDES

Heavy Duty Knocked Down Fully Framed Turnout Open Front Lockers

1.02 REFERENCES

ADAAG - Americans with Disabilities Act, Accessibility Guidelines.

1.03 SUBMITTALS

Submit under provisions of Section 01 33 00. Shop Drawings shall show dimensioned plans, elevations, and sections. For each product specified, two complete sets of color chips representing manufacturer's full range of available colors and finishes.

1.04 DELIVERY, STORAGE AND HANDLING

Store products in manufacturer's unopened packaging until ready for installation to protect the locker finish and adjacent surfaces from damage.

PART 2 - PRODUCTS

2.01 MANUFACTURER

Acceptable Manufacturer: Penco Products, Inc., which is located at: 1820 Stonehenge Drive, Greenville, NC 27858; Tel: 800-562-1000; Fax: 800-248-1555; Email: general@pencoproducts.com; Web: www.pencoproducts.com

Lockers shall be GREENGUARD Gold Certified by UL Environment through the GREENGUARD Certification Program.

2.02 MATERIALS

Steel: Prime grade mild cold-rolled sheet steel free from surface

imperfection, capable of taking a high-grade enamel finish and in compliance with ASTM A1008. Steel: Sheet steel components shall be fabricated using zinc-coated steel free from surface imperfection, capable of taking a high-grade enamel finish and in compliance with ASTM A653. Flattened Expanded Metal Divisions that meets or exceeds ASTM A1008/A1008M, captured on all sides by the tubular shaped frame assembly. Self-Tapping Screws and Rivets. Provide only metal lockers that conform to Made in US regulations.

2.03 HEAVY DUTY OPEN FRONT PERSONAL EQUIPMENT LOCKERS

Heavy Duty Lockers: All locker body components made of cold rolled steel specially formed for added strength and rigidity and to ensure tight joints at fastening points.

Locker Body Construction: Bottoms, Tops and Shelves made from 16-gauge steel. Sides shall be either 16-gauge solid, flattened expanded metal, or 16-gauge diamond perforation (on 72 inch high only). Backs shall be solid 18-gauge single piece. Tops and bottoms with four sides formed at 90 degrees welded to the fully-framed channel with cast corner pieces. Channel Base shall be 4 inch or 6 inch high from 14-gauge sheet forming "C" channel attached to locker bottom. Shelves with four sides formed to 90 degrees, front edge having a second bend. Tubular frame construction with cast steel interlocks to provide a true fully

framed locker body construction. Hole spacing in body not to exceed 3 inches. Optional factory assembly of lockers (welded version only).

2.04 INTERIOR EQUIPMENT

Heavy Duty Fully Framed Turnout Lockers Without Doors: Optional Full Width Shelf - located approximately 13-inches (330 mm) below top of locker. Optional Coat Rod - using two heavy duty single prong hooks, mounted to shelf and two single prong hooks with a diameter of 0.187 in rear, mounted to shelf.

2.05 ACCESSORIES

(For Full Line of Accessories see Complete Specifications Online)

2.06 FABRICATION

Fabricate lockers with fully framed construction, 8 male/female tubular insertion points to provide the fully framed locker body, square, rigid, without warp, with metal faces flat and free of distortion. Fabricate lockers on the unit principle, each locker with individual door and frame, individual top, bottom, back, and shelves. Verify dimensions and arrangement before fabrication.

Finish: Enamel powder coat paint finish electrostatically applied and properly cured to manufacturer's specifications for optimum performance. Finishes releasing VOC's and subject to out-gassing are not acceptable. Locker exterior and interior shall

Patriot Fully Framed Turnout Locker Knocked Down (continued)

SNAPSHOT SPECIFICATIONS (continued)

be painted the same color. Standard coating thickness is 1 to 1.2 mils (0.025 to 0.03 mm) dry film thickness minimum. Powder Coat Plus option is 2 to 2.2 mils (.05 to .055 mm). Colors as selected from manufacturer's standard colors.

Alternative finishes: Custom color match, Anti-Graffiti or Anti-Microbial finishes are available.

PART 3 – EXECUTION

3.01 EXAMINATION

Do not begin installation until substrates and bases have been properly prepared. If substrate and bases are the responsibility of another installer, notify Architect of unsatisfactory preparation before proceeding.

3.02 INSTALLATION

Install metal lockers and accessories at locations shown in accordance with manufacturer's instructions. Install lockers plumb, level, and square. Work is not to progress until site meets necessary conditions. Anchor lockers to floor and/or wall as recommended by the manufacturer. Bolt adjoining locker units together to provide rigid installation. Install sloping tops and metal fillers using concealed fasteners. Provide flush hairline joints against adjacent surfaces. Install benches by fastening bench tops to pedestals and securely anchoring to the floor using appropriate anchors for the floor material.

3.03 ADJUSTING

Adjust doors and latches to operate without binding. Verify that latches are operating satisfactorily. Adjust built-in locks to prevent binding of dial or key and ensure smooth operation prior to substantial completion.

Touch-up with factory-supplied paint and repair or replace damaged products before substantial completion.

3.04 PROTECTION

Protect installed products until completion of project.

Get the Full Specifications Here

Log On:



Visit:

pencoproducts.com/tools-resources-downloads/spec-sheets/

Fully Framed Turnout Locker Welded

These are snapshot specifications for quick reference and product selection. Full Specifications with expanded product information can be found on pencoproducts.com and may include updates as a result of Penco's continuous product improvement initiatives.

At a Glance...

- Heavy-duty Turnout locker
- Welded construction
- 16-gauge Top, Bottom, and Shelves
- 16-gauge Diamond or Solid Sides optional
- Flattened Expanded Metal Sides standard
- Wide variety of interior accessories
- 4 or 6-inch high Channel Base available



SNAPSHOT SPECIFICATIONS - Section 10 51 13

PART 1 - GENERAL

1.01 SECTION INCLUDES

Heavy Duty Welded Fully Framed Turnout Open Front Lockers

1.02 REFERENCES

ADAAG - Americans with Disabilities Act, Accessibility Guidelines.

1.03 SUBMITTALS

Submit under provisions of Section 01 33 00. Shop Drawings shall show dimensioned plans, elevations, and sections. For each product specified, two complete sets of color chips representing manufacturer's full range of available colors and finishes.

1.04 DELIVERY, STORAGE AND HANDLING

Store products in manufacturer's unopened packaging until ready for installation to protect the locker finish and adjacent surfaces from damage.

PART 2 - PRODUCTS

2.01 MANUFACTURER

Acceptable Manufacturer: Penco Products, Inc., which is located at: 1820 Stonehenge Drive, Greenville, NC 27858; Tel: 800-562-1000; Fax: 800-248-1555; Email: general@pencoproducts.com; Web: www.pencoproducts.com

Lockers shall be GREENGUARD Gold Certified by UL Environment through the GREENGUARD Certification Program.

2.02 MATERIALS

Steel: Prime grade mild cold-rolled sheet steel free from surface imperfection, capable of taking a

high-grade enamel finish and in compliance with ASTM A1008. Steel: Sheet steel components shall be fabricated using zinc-coated steel free from surface imperfection, capable of taking a high-grade enamel finish and in compliance with ASTM A653. Flattened Expanded Metal Divisions that meets or exceeds ASTM A1008/A1008M, captured on all sides by the tubular shaped frame assembly. Self-Tapping Screws and Rivets. Provide only metal lockers that conform to Made in US regulations.

2.03 HEAVY DUTY OPEN FRONT PERSONAL EQUIPMENT LOCKERS

Heavy Duty Lockers: All locker body components made of cold rolled steel specially formed for added strength and rigidity and to ensure tight joints at fastening points.

Locker Body Construction: Bottoms, Tops and Shelves made from 16-gauge steel. Sides shall be either 16-gauge solid, Flattened Expanded Metal, or 16-gauge diamond perforation (on 72 inch high only). Backs shall be solid 18-gauge single piece. Tops and bottoms with four sides formed at 90 degrees welded to the fully-framed channel with cast corner pieces. Channel Base shall be 4 inch or 6 inch high from 14-gauge sheet forming "C" channel attached to locker bottom. Shelves with four sides formed to 90 degrees, front edge having a second bend. Tubular frame construction with cast steel interlocks to provide a true fully framed locker body construction. Hole spacing in body not to exceed 3

inches. Optional factory assembly of lockers (welded version only).

2.04 INTERIOR EQUIPMENT

Heavy Duty Fully Framed Turnout Lockers Without Doors: Optional Full Width Shelf - located approximately 13-inches (330 mm) below top of locker. Optional Coat Rod - using two heavy duty single prong hooks, mounted to shelf and two single prong hooks with a diameter of 0.187 in rear, mounted to shelf.

2.05 ACCESSORIES

(For Full Line of Accessories see Complete Specifications Online)

2.06 FABRICATION

Fabricate lockers with fully framed construction, 8 male/female tubular insertion points to provide the fully framed locker body, square, rigid, without warp, with metal faces flat and free of distortion.

Fabricate lockers on the unit principle, each locker with individual door and frame, individual top, bottom, back, and shelves. Verify dimensions and arrangement before fabrication.

Finish: Enamel powder coat paint finish electrostatically applied and properly cured to manufacturer's specifications for optimum performance. Finishes releasing VOC's and subject to out-gassing are not acceptable. Locker exterior and interior shall be painted the same color. Standard coating thickness is 1 to 1.2 mils (0.025 to 0.03 mm) dry film thickness

Patriot Fully Framed Turnout Locker Welded (continued)

SNAPSHOT SPECIFICATIONS (continued)

minimum. Powder Coat Plus option is 2 to 2.2 mils (.05 to .055 mm). Colors as selected from manufacturer's standard colors.

Alternative finishes: Custom color match, Anti-Graffiti or Anti-Microbial finishes are available.

PART 3 - EXECUTION

3.01 EXAMINATION

Do not begin installation until substrates and bases have been properly prepared. If substrate and bases are the responsibility of another installer, notify Architect of unsatisfactory preparation before proceeding.

3.02 INSTALLATION

Install metal lockers and accessories at locations shown in accordance with manufacturer's instructions. Install lockers plumb, level, and square. Work is not to progress until site meets necessary conditions. Anchor lockers to floor and/or wall as recommended by the manufacturer. Bolt adjoining locker units together to provide rigid installation. Install sloping tops and metal fillers using concealed fasteners. Provide flush hairline joints against adjacent surfaces. Install benches by fastening bench tops to pedestals and securely anchoring to the floor using appropriate anchors for the floor material.

3.03 ADJUSTING

Adjust doors and latches to operate without binding. Verify that latches are operating satisfactorily. Adjust built-in locks to prevent binding of dial or key and ensure smooth operation prior to substantial completion.

Touch-up with factory-supplied paint and repair or replace damaged products before substantial completion.

3.04 PROTECTION

Protect installed products until completion of project.

Get the Full Specifications Here

Log On:



Visit:

pencoproducts.com/tools-resources-downloads/spec-sheets/

Fully Framed Duty Locker Knocked Down

These are snapshot specifications for quick reference and product selection. Full Specifications with expanded product information can be found on pencoproducts.com and may include updates as a result of Penco's continuous product improvement initiatives.

At a Glance...

- Heavy-duty Duty locker with 33 or 36-inch deep Drawer Base
- Knocked-down construction
- 14-gauge Door, 16-gauge Top and Bottom
- 16-gauge Solid Sides
- Wide variety of interior accessories
- Ultra Cremone Recessed Handle standard



SNAPSHOT SPECIFICATIONS - Section 10 51 13

PART 1 - GENERAL

1.01 SECTION INCLUDES

Heavy Duty Knocked Down Fully Framed Duty Lockers

1.02 REFERENCES

ADAAG - Americans with Disabilities Act, Accessibility Guidelines.

1.03 SUBMITTALS

Submit under provisions of Section 01 33 00. Shop Drawings shall show dimensioned plans, elevations, sections, details of assembly, erection anchorage and clearance requirements. For each product specified, two complete sets of color chips representing manufacturer's full range of colors for selection are available.

1.04 DELIVERY, STORAGE AND HANDLING

Store products in manufacturer's unopened packaging until ready for installation to protect the locker finish and adjacent surfaces from damage.

PART 2 - PRODUCTS

2.01 MANUFACTURER

Acceptable Manufacturer: Penco Products, Inc., which is located at: 1820 Stonehenge Drive, Greenville, NC 27858; Tel: 800-562-1000; Fax: 800-248-1555; Email: general@pencoproducts.com; Web: www.pencoproducts.com.

Lockers shall be GREENGUARD Gold Certified by UL Environment through the GREENGUARD Certification Program.

2.02 MATERIALS

Steel: All Penco standard lockers are constructed using prime grade steel free from surface imperfection capable of

taking high grade enamel finish. Sheet steel components shall be zinc coated and free from surface imperfection and capable of taking high grade enamel finish. Self-tapping screws and rivets. Provide only metal lockers that conform to Made in US regulations.

2.03 HEAVY DUTY LOCKERS

Heavy Duty Lockers: All locker body components made of cold rolled steel specially formed for added strength and rigidity and to ensure tight joints at fastening points.

Locker Body: Bottoms, Tops, and Shelves: 16-gauge steel. Sides: 16-gauge solid sides Backs: Solid 18-gauge steel. One-piece. Doors: 14-gauge steel. Standard Ventilation: 6-inch (152.4 mm) wide by 3/4" high (19.05 mm) high horizontal louvers arranged two groups of 6. Optional Ventilation: 3/4 inch (19 mm) wide by 1-1/2 inch (38 mm) high diamond-shaped perforations. Optional Ventilation: Solid tops and bottoms with four sides formed at 90 degrees welded to the fully-framed channel with cast corner pieces. Shelves with four sides formed to 90 degrees, front and back edge having a second bend. Locker Body Construction: Tubular frame construction with cast steel interlocks provide a true fully framed locker body construction. Hole spacing in locker body construction: Not exceeding 3 inches. Optional factory assembly of lockers (welded version only).

Locker Doors: One piece sheet steel. Provide holes for number plates.

Hinges: Continuous type 16 gauge

hinge measuring full height of door. Welded to door and attached to locker frame using steel rivets.

Duty Locker Drawer Base with Integral Seat:

78-inch-high Duty lockers provide a 78-inches high locker with a 9-inch or 12-inch front extension to create the drawer base. 90-inch-high Duty lockers, provide a 90-inches high locker with a 9-inch or 12-inch front extension to create the drawer base. 16-gauge drawer body, rated at 250 pounds per pair. Drawer face with integral finger grab and punched to accept built-in spring bolt locker lock, key lock or padlock. Hardwood seat: Laminated selected hardwood, 1-1/4 inch (31.75 mm) full finished thickness, corners rounded and sanded, surfaces finished with two coats of clear lacquer. Depth: 9-1/2 inches (241.3 mm) or 12-inches (304.8 mm) depending on front extension size. Length: As shown, continuous along adjoining lockers with drawer bases or individual benches for each unit.

2.04 DOOR HANDLES AND LATCHING

Single Tier Lockers: Ultra Cremone Recessed Handle: Handle shall be a die cast lift handle that engages the door frame on three sides. The top and bottom frames are engaged with 3/8 inch (9.5 mm) steel rods, and a 1/4 x 3-inch-thick center latch engages at the side or left door. Locate handle in the formed stainless steel pocket. Double door configurations shall consist of a left hinged door secured its full length by the right hinged door when latched. Handle assembly shall be secured to the pocket using

Patriot Fully Framed Duty Locker Knocked Down (continued)

a guided channel. Pocket is secured to the door in two places. Doors 18" wide or wider shall be reinforced using a 20-gauge vertical pan spot welded at a maximum of 8" on center to the hinge side of the door. Door shall be reinforced using a 20-gauge horizontal box pan spot a welded a maximum of 8" on center to the hinge and latch side channels, and spot welded a maximum of 8" on center to the door skin along the upper and lower pan edge for optimum strength, quiet operation and stiffness. Firmly secure rubber silencers to locker frame.

ADA Compliant: Ultra Cremone Recessed Handle mechanism shall be ADA complaint requiring no twisting, pinching or tight grasping and is operable using less than 5lbs of force.

2.05 INTERIOR EQUIPMENT

Heavy Duty Lockers With Doors:

Optional Full Width Shelf - located approximately 13-inches (330 mm) below top of locker. Optional Coat Rod - using two heavy duty single prong hooks, mounted to shelf and two single prong hooks with a diameter of 0.187 in rear, mounted to shelf.

2.06 ACCESSORIES

(See full product specifications.)

2.07 FABRICATION

Fabricate lockers with fully framed construction, 8 male/female tubular insertion points to provide the fully framed locker body, square, rigid, without warp, with metal faces flat and free of distortion. Fabricate lockers on the unit principle, each locker with individual door and frame, individual top, bottom, back, and shelves. Verify dimensions and arrangement before fabrication.

Finish: Enamel powder coat paint finish electrostatically applied and properly cured to manufacturer's specifications for optimum performance. Finishes containing volatile organic compounds and subject to out-gassing are not acceptable. Locker exterior and interior shall be painted the same color.

Alternative finishes: Custom color, Anti- Graffiti, and Anti-Microbial finishes are available.

PART 3 - EXECUTION

3.01 EXAMINATION

Do not begin installation until substrates and bases have been properly prepared. If substrate and bases are the responsibility of another installer, notify Architect of unsatisfactory preparation before proceeding.

3.02 INSTALLATION

Install metal lockers and accessories at locations shown in accordance with manufacturer's instructions. Install lockers plumb, level, and square. Work is not to progress until site meets necessary conditions. Anchor lockers to floor and/or wall as recommended by the manufacturer. Bolt adjoining locker units together to provide rigid installation. Install sloping tops and metal fillers using concealed fasteners. Provide flush hairline joints against adjacent surfaces. Install benches by fastening bench tops to pedestals and securely anchoring to the floor using appropriate anchors for the floor material.

3.03 ADJUSTING AND CLEANING

Adjust doors and latches to operate without binding. Verify that latches are operating satisfactorily. Adjust built-in locks to prevent binding of dial or key and ensure smooth operation prior to substantial completion. Touch-up with factory-supplied paint and repair or replace damaged products before substantial completion.

3.04 PROTECTION

Protect installed products until completion of project.

Get the Full Specifications Here

Log On:



Visit:

pencoproducts.com/tools-resources-downloads/spec-sheets/

Patriot Fully Framed Duty Locker Welded

These are snapshot specifications for quick reference and product selection. Full Specifications with expanded product information can be found on pencoproducts.com and may include updates as a result of Penco's continuous product improvement initiatives.

At a Glance...

- Heavy-duty Duty locker with 33 or 36-inch deep Drawer Base
- Welded construction
- 14-gauge Door, 16-gauge Top and Bottom
- 16-gauge Solid Sides
- Wide variety of interior accessories
- Ultra Cremone Recessed Handle standard



SNAPSHOT SPECIFICATIONS - Section 10 51 13

PART 1 - GENERAL

1.01 SECTION INCLUDES

Heavy Duty Welded Fully Framed Duty Lockers

1.02 REFERENCES

ADAAG - Americans with Disabilities Act, Accessibility Guidelines.

1.03 SUBMITTALS

Submit under provisions of Section 01 33 00. Shop Drawings shall show dimensioned plans, elevations, sections, details of assembly, erection anchorage and clearance requirements. For each product specified, two complete sets of color chips representing manufacturer's full range of colors for selection are available.

1.04 DELIVERY, STORAGE AND HANDLING

Store products in manufacturer's unopened packaging until ready for installation to protect the locker finish and adjacent surfaces from damage.

PART 2 - PRODUCTS

2.01 MANUFACTURER

Acceptable Manufacturer is Penco Products, Inc. located at 1820 Stonehenge Dr., Greenville, NC 27858.

Lockers shall be GREENGUARD Gold Certified by UL Environment through the GREENGUARD Certification Program.

2.02 MATERIALS

Steel: All Prime grade mild cold-rolled sheet steel free from surface imperfection, capable of taking a high-grade enamel finish and in compliance with ASTM A1008. Sheet steel components shall be fabricated using zinc-coated steel free from surface

imperfection, capable of taking a high-grade enamel finish and in compliance with ASTM A653. Self-Tapping Screws and Rivets. Provide only metal lockers that conform to Made in US regulations.

2.03 HEAVY-DUTY PERSONAL DUTY LOCKERS

Heavy Duty Lockers: All locker body components made of cold rolled steel specially formed for added strength and rigidity and to ensure tight joints at fastening points.

Locker Body Construction: Welded shell. Bottoms, Tops, and Shelves: 16-gauge steel. Sides: 16-gauge solid sides. Backs: Solid 18-gauge steel. One-piece. Doors: 14-gauge steel. Standard Ventilation: 6-inch (152.4 mm) wide by 3/4" high (19.05 mm) high horizontal louvers arranged two groups of 6. Optional Ventilation: 3/4 inch (19 mm) wide by 1-1/2 inch (38 mm) high diamond-shaped perforations. Optional Ventilation: Solid tops and bottoms with four sides formed at 90 degrees welded to the fully- framed channel with cast corner pieces. Shelves with four sides formed to 90 degrees, front and back edge having a second bend. Locker Body Construction: Welded shell. Tubular frame construction with cast steel interlocks provide a true fully framed locker body construction. Hole spacing in locker body construction: Not exceeding 3 inches.

Locker Doors: One piece sheet steel. Provide holes for number plates.

Hinges: Continuous type: 16 gauge hinge measuring full height of door. Welded to door and attached to locker frame using steel rivets.

Duty Locker Drawer Base with Integral Seat:

78-inch high Duty lockers, provide a 78-inch high locker with a 9-inch or 12-inch front extension to create the drawer base. 90-inch high Duty lockers, provide a 90-inch high locker with a 9-inch or 12-inch front extension to create the drawer base. 16-gauge drawer body, rated at 250 pounds per pair. Drawer face with integral finger grab and punched to accept built-in spring bolt locker lock, key lock or padlock. Hardwood seat: Laminated selected hardwood, 1-1/4 inch (31.75 mm) full finished thickness, corners rounded and sanded, surfaces finished with two coats of clear lacquer. Depth: 9-1/2 inches (241.3 mm) or 12-inches (304.8 mm) depending on front extension size. Length: As shown, continuous along adjoining lockers with drawer bases or individual benches for each unit.

2.04 DOOR HANDLES AND LATCHING

Single Tier Lockers: Ultra Cremone Recessed Handle: Handle shall be a die cast lift handle that engages the door frame on three sides. The top and bottom frames are engaged with 3/8 inch (9.5 mm) steel rods, and a 1/4 x 3-inch-thick center latch engages at the side or left door. Locate handle in the formed stainless steel pocket. Double door configurations shall consist of a left hinged door secured its full length by the right hinged door when latched. Handle assembly shall be secured to the pocket using a guided channel. Pocket is secured to the door in two places. Doors 18" wide

Patriot Fully Framed Duty Locker Welded (continued)

SNAPSHOT SPECIFICATIONS (continued)

or wider shall be reinforced using a 20-gauge vertical pan spot welded at a maximum of 8" on center to the hinge side of the door. Door shall be reinforced using a 20-gauge vertical pan spot welded a maximum of 8" on center to the hinge and latch side channels, and spot welded a maximum of 8" on center to the door skin along the upper and lower pan edge for optimum strength, quiet operation and stiffness. Firmly secure rubber silencers to locker frame.

ADA Compliant: Ultra Cremone Recessed Handle mechanism shall be ADA complaint requiring no twisting, pinching or tight grasping and is operable using less than 5lbs of force.

2.05 INTERIOR EQUIPMENT

Heavy Duty Duty Lockers with Doors:

Optional Full Width Shelf - located approximately 13-inches (330 mm) below top of locker. Optional Coat Rod - using two heavy duty single prong hooks, mounted to shelf and two single prong hooks with a diameter of 0.187 in rear, mounted to shelf.

2.06 ACCESSORIES

(See full product specifications.)

2.07 FABRICATION

Fabricate lockers with fully framed construction, 8 male/female tubular insertion points to provide the fully framed locker body, square, rigid, without warp, with metal faces flat and free of distortion. Fabricate lockers on the unit principle, each locker with individual door and frame, individual top, bottom, back, and shelves. Verify dimensions and arrangement before fabrication.

Finish: Enamel powder coat paint finish electrostatically applied and properly cured to manufacturer's specifications for optimum performance. Finishes containing volatile organic compounds and subject to out-gassing are not acceptable. Locker exterior and interior shall be painted the same color. Powder Coat - Dry Thickness: 1 to 1.2 mils (0.025 to 0.03 mm). Powder Coat Plus - Dry Thickness: 2 to 2.2 mils (0.05 to 0.055 mm). Color: As selected from manufacturer's standard colors.

Special Finishes: Custom color, Anti-Graffiti, and Anti-Microbial finishes are available.

PART 3 - EXECUTION

3.01 EXAMINATION

Do not begin installation until substrates and bases have been properly prepared. If substrate and bases are the responsibility of another installer, notify Architect of unsatisfactory preparation before proceeding.

3.02 INSTALLATION

Install metal lockers and accessories at locations shown in accordance with manufacturer's instructions. Install lockers plumb, level, and square. Work is not to progress until site meets necessary conditions. Anchor lockers to floor and/or wall as recommended by the manufacturer. Bolt adjoining locker units together to provide rigid installation. Install sloping tops and metal fillers using concealed fasteners. Provide flush hairline joints against adjacent surfaces. Install benches by fastening bench tops to pedestals and securely anchoring to the floor using appropriate anchors for the floor material.

3.03 ADJUSTING AND CLEANING

Adjust doors and latches to operate without binding. Verify that latches are operating satisfactorily. Adjust built-in locks to prevent binding of dial or key and ensure smooth operation prior to substantial completion.

Touch-up with factory-supplied paint and repair or replace damaged products before substantial completion.

3.04 PROTECTION

Protect installed products until completion of project.

Get the Full Specifications Here

Log On:



Visit:

pencoproducts.com/tools-resources-downloads/spec-sheets/

SNAPSHOT SPECIFICATIONS - Section 10 51 13

PART 1 - GENERAL

1.01 SECTION INCLUDES

Accessories for Metal Lockers

1.02 REFERENCES

ADAAG - Americans with Disabilities Act, Accessibility Guidelines.

1.03 SUBMITTALS

Submit under provisions of Section 01 33 00. Shop Drawings shall show dimensioned plans, elevations, and sections.

1.04 DELIVERY, STORAGE AND HANDLING

Store products in manufacturer's unopened packaging until ready for installation to protect the locker finish and adjacent surfaces from damage.

PART 2 - PRODUCTS

2.01 MANUFACTURER

Penco Products, Inc. or approved equal based upon ability to provide product compliant with specifications of the product selected. Provide only metal lockers that conform to Made in US regulations.

Lockers shall be GREENGUARD Gold Certified by UL Environment through the GREENGUARD Certification Program.

2.02 MATERIALS

Steel: All Penco standard accessories are constructed using prime grade mild cold-rolled sheet steel free from surface imperfection meeting ASTM A1008 and capable of taking a high-grade enamel powder coat finish. Alternate material: Sheet steel components shall be fabricated using zinc-coated steel meeting ASTM A653 and finished in the same manner.

2.03 ACCESSORIES

Number Plates: Provide each locker with a polished aluminum number plate, 2-1/4 inches (57 mm) wide by 1 inch (25 mm) high, with black numerals not less than 3/8 inch (9.5 mm) high; attach to face of door on lockers and face of shelf on Turnout and Stadium, with two aluminum rivets.

Locks: Built-in flat key locks; master-key to same series. Built-in grooved key locks (pin tumbler); master-key to same series. Built-in three-number dialing combination locks capable of at least five different

combination changes; provide master key, combination change key and combination control chart. Padlocks: master-keyed three-number dialing combination type padlocks: provide master key.

Channel Base: 4-inch high. 14-gauge sheet forming a "C" channel attached to locker bottom. 6-inch high. 14-gauge sheet forming a "C" channel attached to locker bottom.

Name Card Holder: Plated steel. Holds 1.25" (31.75 mm) x 2.75" card (69.85 mm).

Center Partition: 16-gauge with flanged front. Attaches securely to shelf and locker bottom or additional lower shelf. (Not for use with footlocker or seat) Mounting holes for side shelves provided on nominal 6 inch centers.

Side Shelf: 16-gauge, used with center partition only. Flanged on three sides.

Acrylic mirror: Self adhesive, 6-inch (152.4 mm) x 8 inch (203.2 mm).

Hooks: Used for Coat Rod. Two heavy-duty single prong hooks with a diameter of 0.276 mounted to shelf and designed to accept a coat rod.

Coat Rod, Full Length: Using coat rod hooks mounted to shelf: 18-inch (used with 18-inch wide locker only); 24-inch (used with 24-inch wide locker only); 30-inch (used with 30-inch wide lockers only); 36-inch (used with 36-inch wide lockers only); 42-inch (used with 42-inch wide lockers only); 48-inch (used with 48-inch wide lockers only)

Coat Rod, Half Length: Using coat rod hooks mounted to shelf: 9-inch (used with 18-inch locker with center partition or half shelves); 12-inch (used with 24-inch locker with center partition or half shelves); 15-inch (used with 30-inch locker with center partition or half shelves); 36-inch (actually 18-inch long and used with 36-inch locker with center partition or half shelves); 42-inch (actually 21-inch long and used with 42-inch locker with center partition or half shelves); 48-inch (actually 24-inch long and used with 48-inch locker with center partition or half shelves)

Garment Separator: Full width. Use

as an alternative to the optional Coat Rod accessory. Attaches to shelf.

Hooks: Single prong hooks with a diameter of 0.187 in rear, mounted to shelf.

Full width shelves: 16-gauge, flanged on all four sides, formed to 90 degrees, front and back edge having a second bend, attached securely to mounting side rails. Optional Back Rails are available for additional shelf support when needed.

Back Rails: 16 gauge, Optional, one per shelf, used with Full Width Shelves when extra support is needed.

Half Shelves: "L" Shaped Half Shelves: 16-gauge, flanged on three sides and attached securely on one side with a side rail, and flanged partition mounted to shelf or half shelf above.

Security Box, 12 inch: 16-gauge lockable door with a 16-gauge top and RH side and LH side panel. The door is attached to a welded frame with a continuous hinge which is welded to the door and riveted to the frame. The door is locked through a single point latch with a padlock or built-in lock. A door pull shall be provided for use with padlocks. Widths: 12-inch, 18-inch and 24-inch.

Inner Compartment Door: Attached to "L" shaped half shelf.

Inner Compartment Panels: Used with inner compartment door unit, when ordering a flattened expanded metal division and an inner compartment door together, this panel is used in the inside of compartment to block the view from the outside.

Cell Phone/Key Tray: 8-inch (203.2 mm) x 2-inch (50.8 mm) x 2-inch (50.8 mm) mounted to center partition or half shelf. If either of these items are being ordered, you can attach it to the side of the locker using 2 side rails (ordered separately)

Boot Tray: Aluminum, measuring 14 x 12.

Metal Seat only: 14 gauge, mounted using mounting rails to vertical corner posts allowing adjustability.

SNAPSHOT SPECIFICATIONS (continued)

Hardwood Bench Seat only: 1-1/4" thick full depth, mounted using mounting rails to vertical corner posts allowing adjustability.

Individual Hardwood Seat for Duty Lockers: 1-1/4" full finished thickness depth, Corners rounded and sanded, exposed surfaces finished with two coats of clear lacquer.

Footlocker: Recessed from locker frame to clear full-length locker door. Front footlocker panel includes single point latch with padlock strike plate and vertical slots. 14-gauge lid of footlocker has a continuous hinge and serves as a seat. Rubber bumpers mounted to the contact points quiets opening and closing of the lid. Two reinforcement channels welded to bottom strengthens seat lid. Two mounting side rails attached to the vertical posts support lid/seat.

Document Sleeve Small: 16 gauge measuring 9.5-inch x 3-inch x 8-inch

Document Sleeve Large: 16 gauge measuring 12-inch x 3-inch x 8-inch

Drawer Base Unit for Duty Lockers: 78-inch-high Duty lockers provide a 78-inches high locker with a 9-inch or 12-inch front extension to create the drawer base. 90-inch-high Duty lockers provide a 90-inches high locker with a 9-inch or 12-inch front extension to create the drawer base, 16-gauge drawer body, rated at 250 pounds per pair. Drawer face with integral finger grab and punched to accept built-in spring bolt locker lock, key lock or padlock.

Bottom Drawers: 12-inch high. Drawer body shall be constructed of 16-gauge sheet steel, mounted using an integral "C" channel and mounted to the side rails that are mounted to the corner posts.

Intermediate Drawers: 6-inch high. Drawer body shall be constructed of 16-gauge sheet steel, mounted using an integral "C" channel and mounted to the side rails that are mounted to the corner posts.

Parachute/Body Armor Rack:
a. Formed from 3/4-inch diameter, heavy wall steel tube. Reinforced by 14-gauge gussets. Mounted securely to rear of locker. 180-pound capacity. Rack is attach by drilling holes in the

locker back and using the nuts, bolts and washers supplied. If ordering welded, installation will be done at factory, if ordering knockdown must be done on site.

Heavy-Duty Bench Pedestals: Steel tubing with 11-gauge steel flanges welded to each end, 16-1/4 inches (412 mm) high, finish to match lockers.

Stainless Steel Free-Standing Bench Pedestals: 2-inch (50 mm) diameter brushed 16-gauge stainless steel formed into a trapezoid, 14-inch (355 mm) wide bottom with two 5/16 inch (7.9 mm) diameter holes, top flange with four 5/16 inch (7.9 mm) diameter holes for fastening to bench.

PART 3 - EXECUTION

3.01 EXAMINATION

Do not begin installation until substrates and bases have been properly prepared. If substrate and bases are the responsibility of another installer, notify Architect of unsatisfactory preparation before proceeding.

3.02 INSTALLATION

Install metal accessories at locations shown in accordance with manufacturer's instructions. Install sloping tops and metal fillers using concealed fasteners. Provide flush hairline joints against adjacent surfaces. Install benches by fastening bench tops to pedestals and securely anchoring to the floor using appropriate anchors for the floor material.

3.03 ADJUSTING

Adjust built-in locks to prevent binding of dial or key and ensure smooth operation prior to substantial completion.

Touch-up with factory-supplied paint and repair or replace damaged products before substantial completion.

3.04 PROTECTION

Protect installed products until completion of project.

Get the Full Specifications Here

Log On:



Visit:

pencoproducts.com/tools-resources-downloads/spec-sheets/

PATRIOT® Color Options Identification Matrix

| | | | | | | | |
|-----------------|-------------------------|------------------------|--------------------|---------------------|--------------------|----------------------|-----------------------|
| 054 Canvas | 021 Gray Ash | 028 Gray | 073 Champagne | 723 Light Putty | 012 Tawny Tan | 701 Spray Green | 952 Turquoise Teal |
| 055 Shamrock | 812 Hunter Green | 715 Lake Blue | 826 Slate Blue | 806 Marine Blue | 052 Reflex Blue | 822 Regal Blue | 058 Nordic Purple |
| 056 Sunburst | 710 Sagebrush Yellow | 720 Mandarin Orange | 722 Patriot Red | 767 Cardinal Red | 736 Burgundy | 848 January White | 949 Jet Black |

NOTE: Colors shown are as close to actual finishes as the printing process allows. Do not make your final color selection based on the color shade shown on this page. Penco Color Charts are available for a more accurate color match. Exposure to high humidity, chlorine salts, abrasive cleaners, germicidal cleaners and acids can damage the finish and will void the guarantee. For outdoor applications or other harsh environmental conditions, contact your Penco representative.

Standard Colors

To assure rust resistance and paint adhesion, all Penco steel products receive a state of the art pre-paint conditioning that includes a thorough cleansing by a hot spray washing process, then a specially formulated coating is applied creating a surface that resists corrosion and improves paint adhesion. All lockers are available in the 24 colors shown above.

Standard Powder Coat Finish

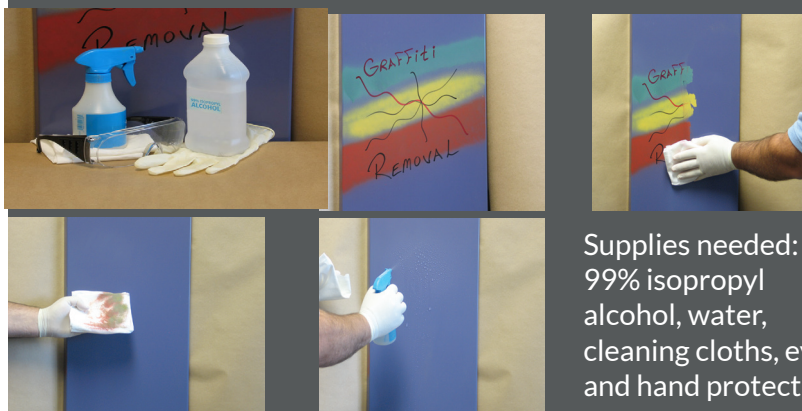
Penco's standard 1 mil thick paint finish is perfect for most applications. The paint surface is tough and durable and offers a beautiful drip-free surface, excellent edge coverage and environmentally friendly application.

PowderCoatPlus™

PowderCoatPlus is an optional cost-effective way of improving the durability and rust resistance. After a specialized cleaning and pre-treatment of the steel, a 2 mil thick coating of powder coat enamel is applied and baked onto the steel surface.

Antimicrobial Paint

Antimicrobial Paint finishes offer an added level of protection against virus and disease-causing micro-organisms while increasing resistance to stain and odor-causing bacteria, yielding an easier-to-clean product with extended durability and aesthetic appeal.



X-Off™ Anti-Graffiti Paint

Penco's optional X-Off Anti-Graffiti Paint for lockers provides a surface coating that allows easy removal of graffiti with alcohol and water. This specially formulated paint has a tight molecular structure that completely seals the locker surface, preventing graffiti and corrosive agents from penetrating the finish.

Supplies needed:
99% isopropyl alcohol, water, cleaning cloths, eye and hand protection.

Penco's Full Range of Lockers

Penco has been building lockers for decades that last for decades and has become a part of the fabric of American life. Look in any school and chances are you'll find Penco's lockers in the athletic department, field house, faculty break room and of course, lining the corridors.

School lockers may be Penco's foundation, but the spectrum of products doesn't end there. Penco has locker solutions for recreation centers, health clubs, hospitals, back office and industry break rooms, while at the same time delivering the widest range of solutions to serve first responders in the military, law enforcement and fire and rescue professions.

The Vanguard line is Penco's traditional range of steel lockers designed for many uses including school corridor lockers and employee lockers. Each latch hook features a noise-reducing rubber bumper for quieter operation.

Standard Guardian lockers build upon the design features of the Vanguard series with several enhancements and options that give it a distinctive look. Our one piece deep drawn Classic III stainless steel recessed handle is part of every Guardian. It eliminates protrusions from the locker front and accepts a padlock or a built-in lock.

Penco's Invincible II athletic lockers are an exceptionally attractive and durable choice for gym lockers. Ideal for applications that require a high degree of ventilation and strength, or where visual inspection of locker contents is desired.



Additional Penco locker lines include: Welded Gen2, Stadium, and Patriot Fully Framed.

Common Color Body Parts (Vanguard and Guardian only): Backs, tops, bottoms, sides, & shelves all come in 073 Champagne as standard. Full color available upon special order at an additional cost.



PENCO PRODUCTS, INC.

1820 STONEHENGE DRIVE, GREENVILLE, NC 27858

 800.248.1555  WWW.PENCOPRODUCTS.COM